

# Sketch Concepts Activity

Fast Eddie's Project – Spatial Planning

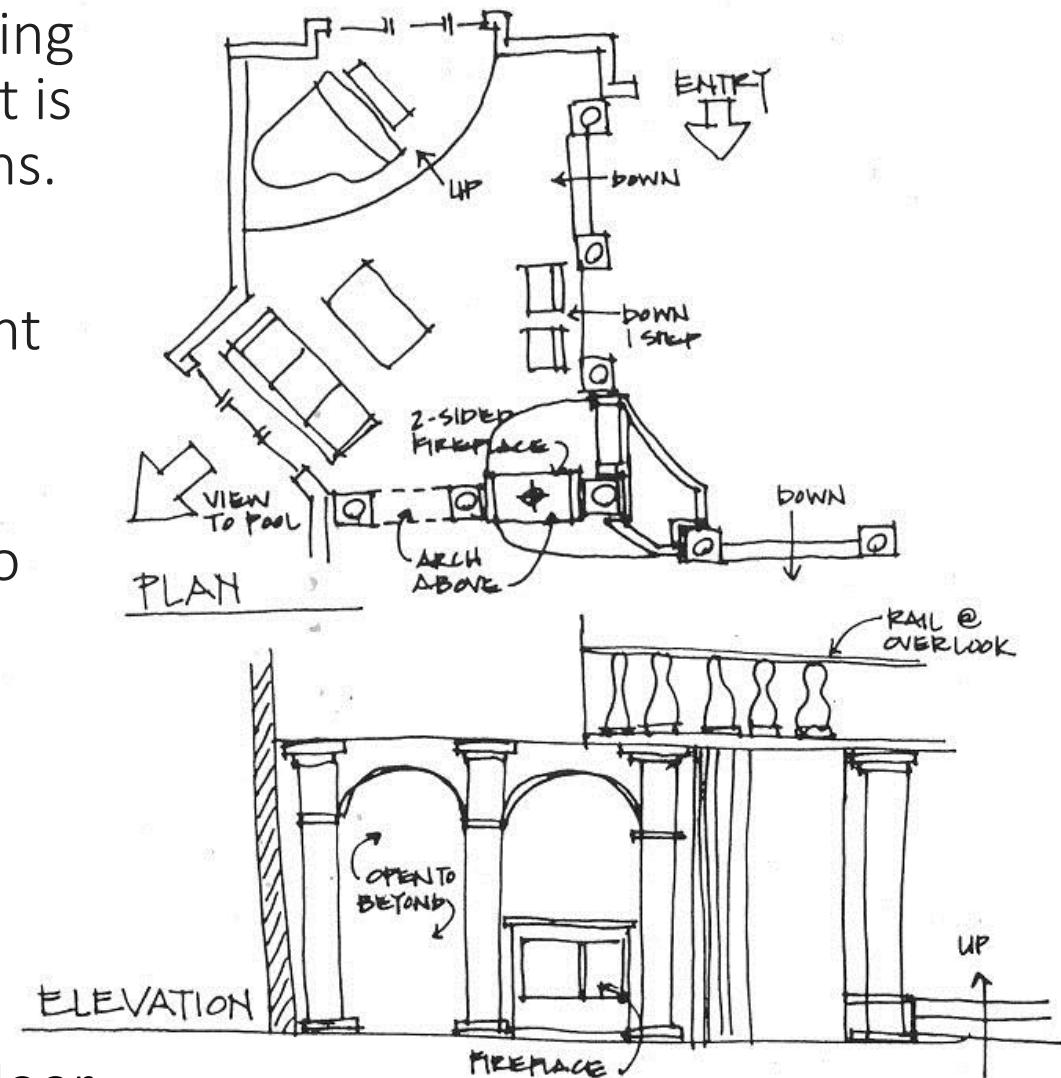
Design Process 3

BSBCRT501A Originate and develop concepts

BSBDES502A Establish, negotiate and refine a design brief

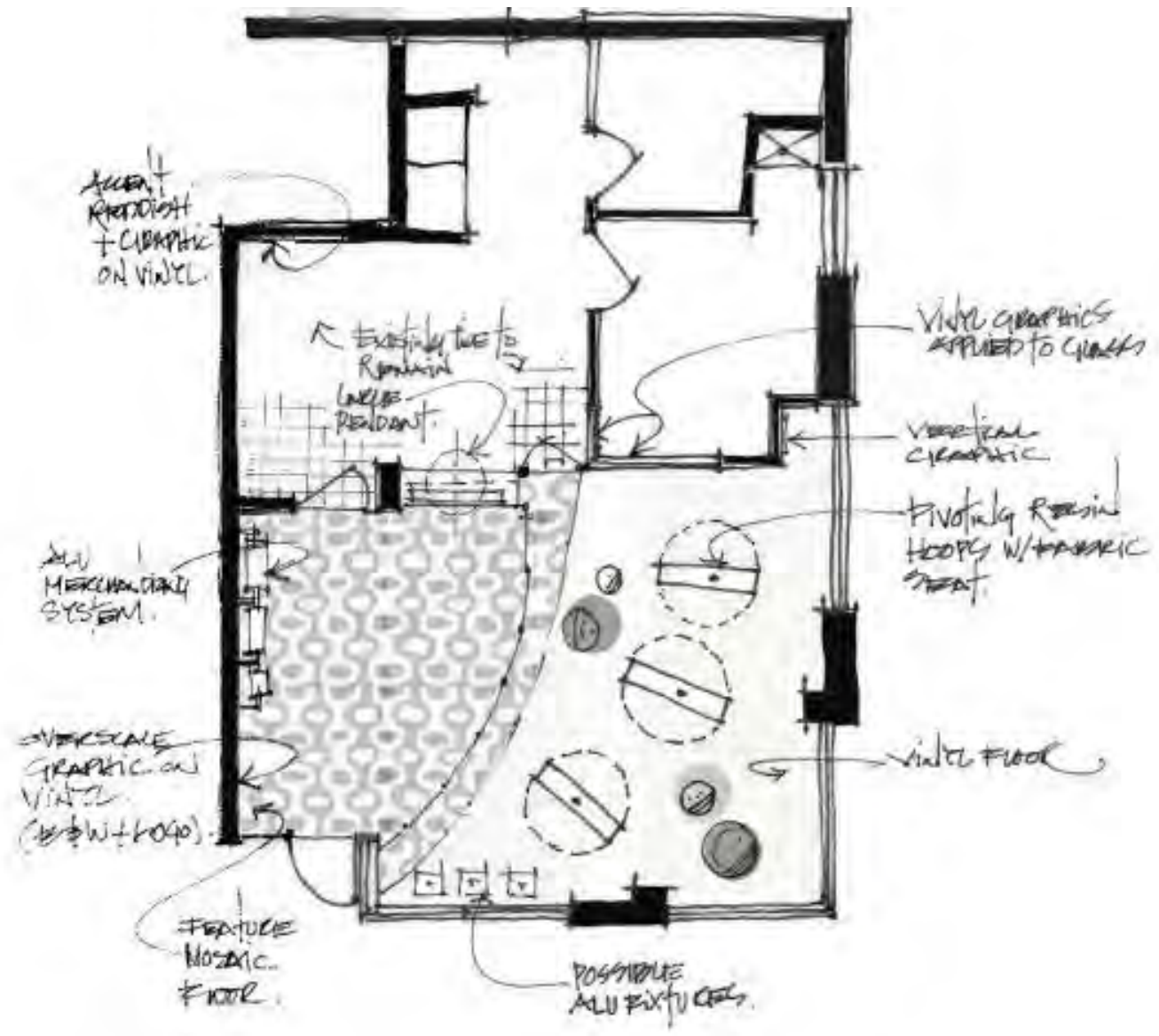
# Sketched Concepts

- With clear direction on where the layout is heading through exploration of relationships and spaces, it is now time to develop sketch plans of layout options.
- Approximations for typical spaces and furniture items become easier with experience. As a student and emerging designer it is helpful to use plan sketches.
- These are generalised quick sketches on paper to explore the proposed location of furniture, partitions, joinery, fittings and features.
- A basic knowledge of furniture sizes, possible arrangements and dimensional relationships between individual pieces is essential - otherwise you will be unable to work quickly.
- Following are some examples of initial concept floor plans and elevation sketches.



Example

# Sketched Concept Examples – Plans



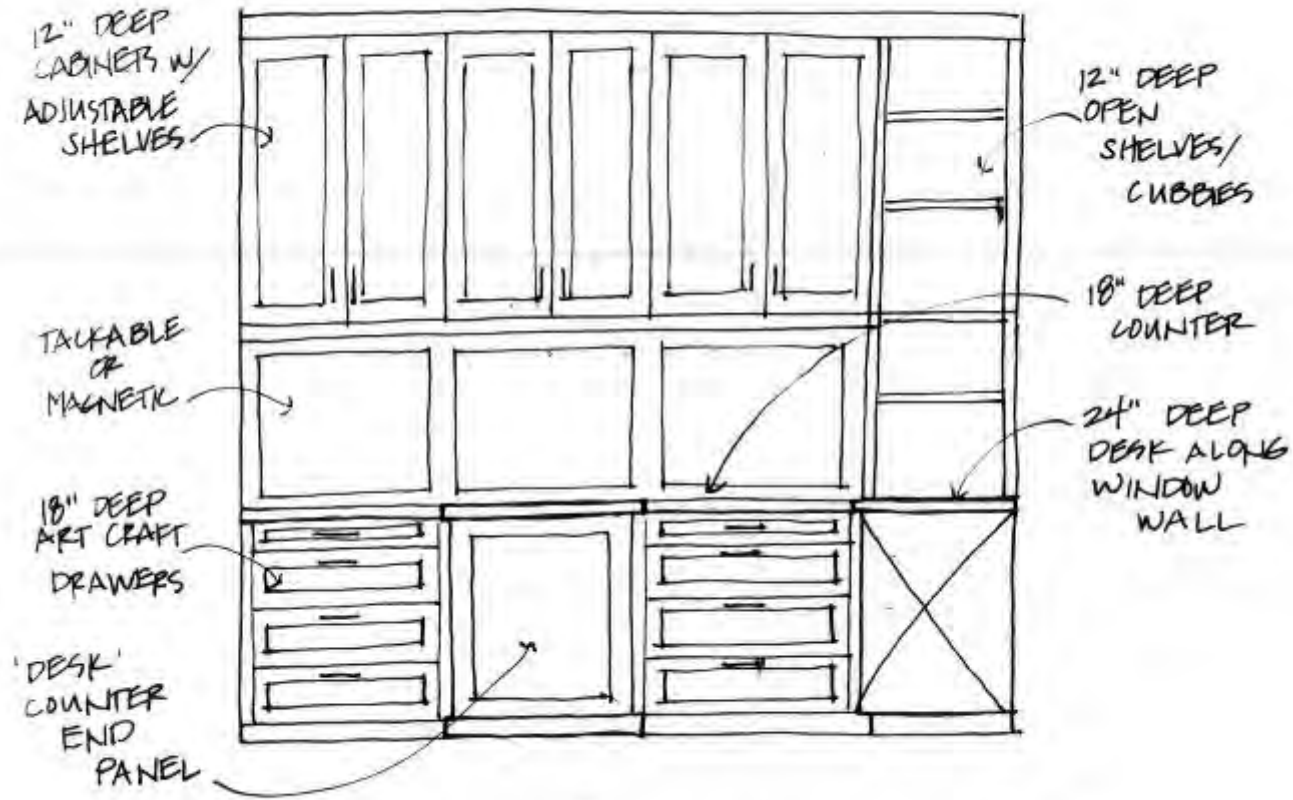
# Sketched Concept Examples – Plans



# Sketched Concept Examples – Plans

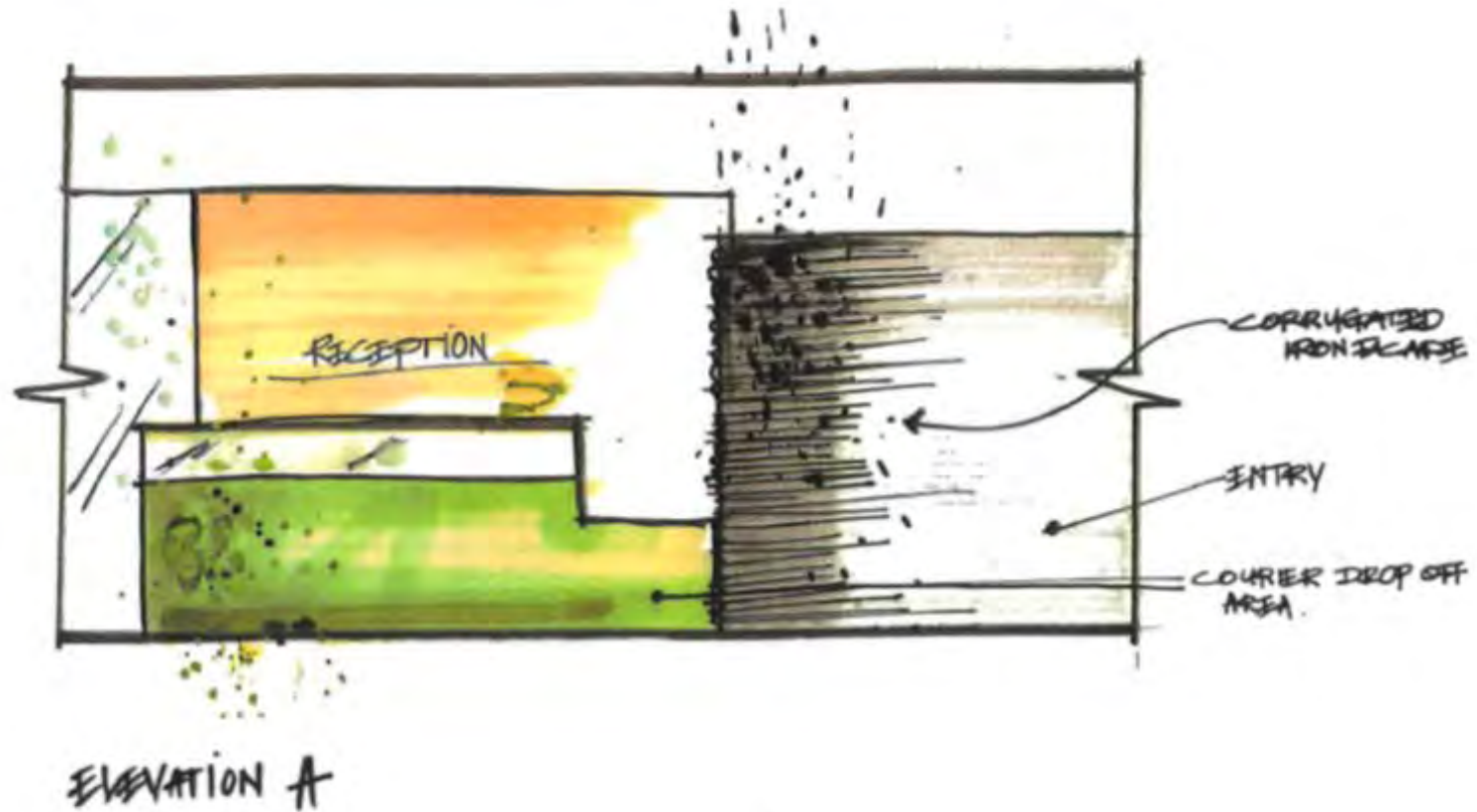


# Sketched Concept Examples – Elevations



CRAFT ROOM ELEVATION CONCEPT

# Sketched Concept Examples – Elevations



# Sketched Concept Examples – Elevations



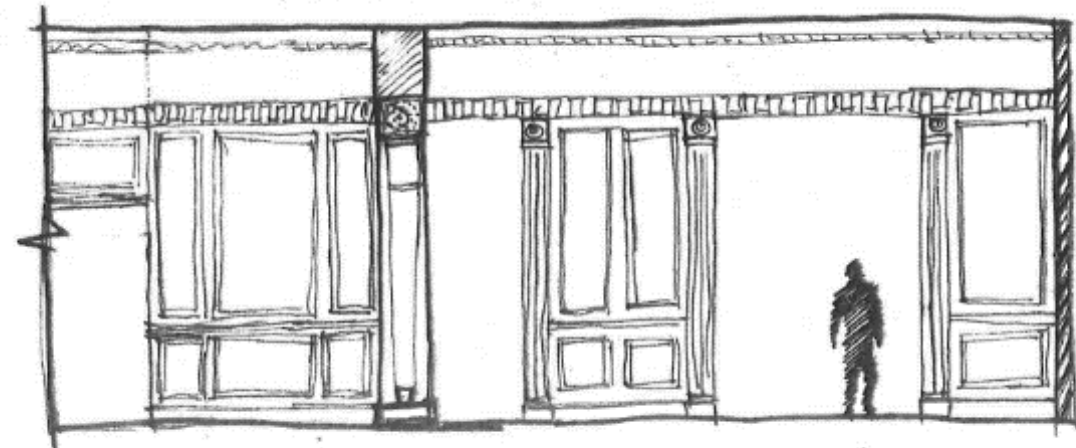
ELEVATION B



# Sketched Concept Examples – Elevations



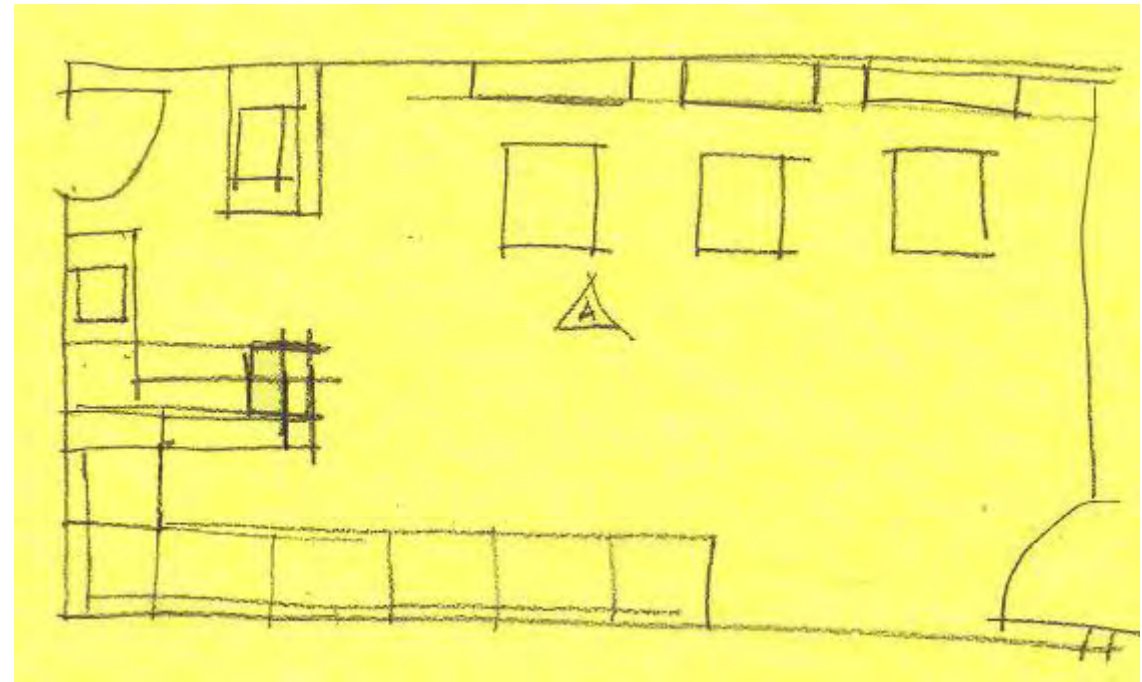
EASTERN ELEVATION LOBBY & RECEPTION 1:50



WESTERN ELEVATION RECEPTION & LOBBY 1:50

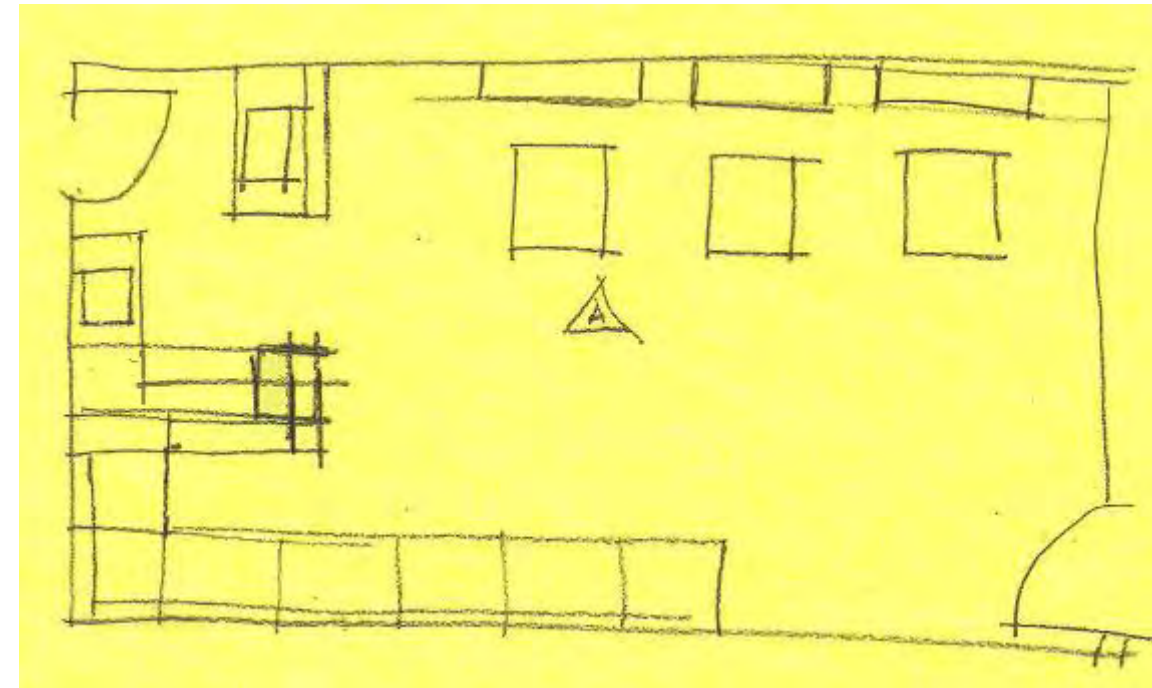
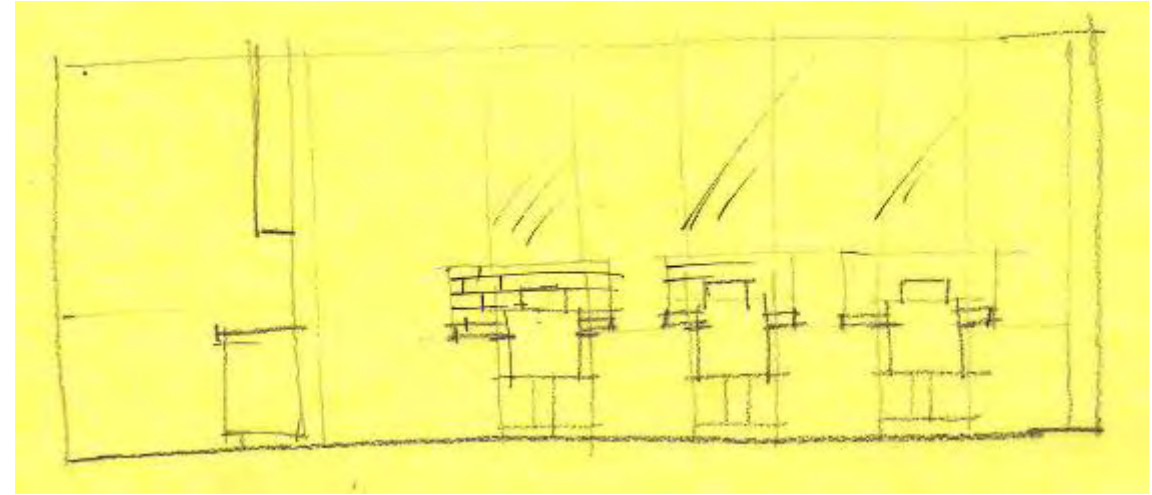
# Sketched Concepts – Activity

- From the bubble plans created for the Fast Eddie's project, you can now begin exploring actual floor plan and elevation options.
- Explore several options keeping your drawings loose using yellow trace paper to trace the plan and include furniture and other features.



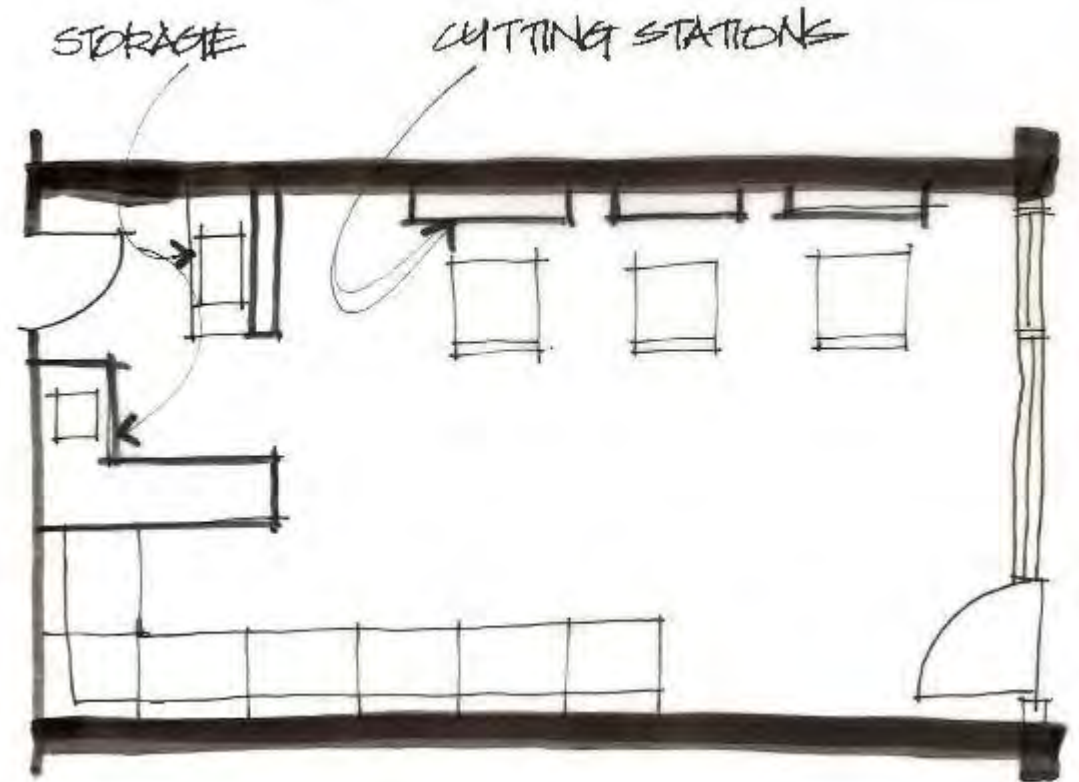
# Sketched Concepts – Activity

- Create quick exploratory elevation(s) from your initial concept floor plan.
- Refer to the anthropometric data previously provided for minimum and recommended heights of elements.
- Use the dimensions provided for the heights of the barber chairs.



# Sketched Concepts – Activity

- Once you are satisfied with 2 options, use tracing paper and fine line markers to create loose drawings for inclusion in your Sketchpack presentation.
- Use notations to explain features of your design.
- Keep notations neat and aligned.
- Although only a floor plan is shown here, you are required to complete this process for your elevation concepts too. Remember to include an elevation symbol on your plan (see previous yellow trace drawing).



# Sketched Concepts – Activity

- Photocopy your traced drawing and splash some colour onto these. This is to help delineate space and materials used.
- Scan your rendered concept drawings and include in your Sketchpack presentation.
- Scan all your drawings completed in the spatial planning process (yellow trace etc.) and file in your *Drawings* folder.

