

Bubble Diagram Activity

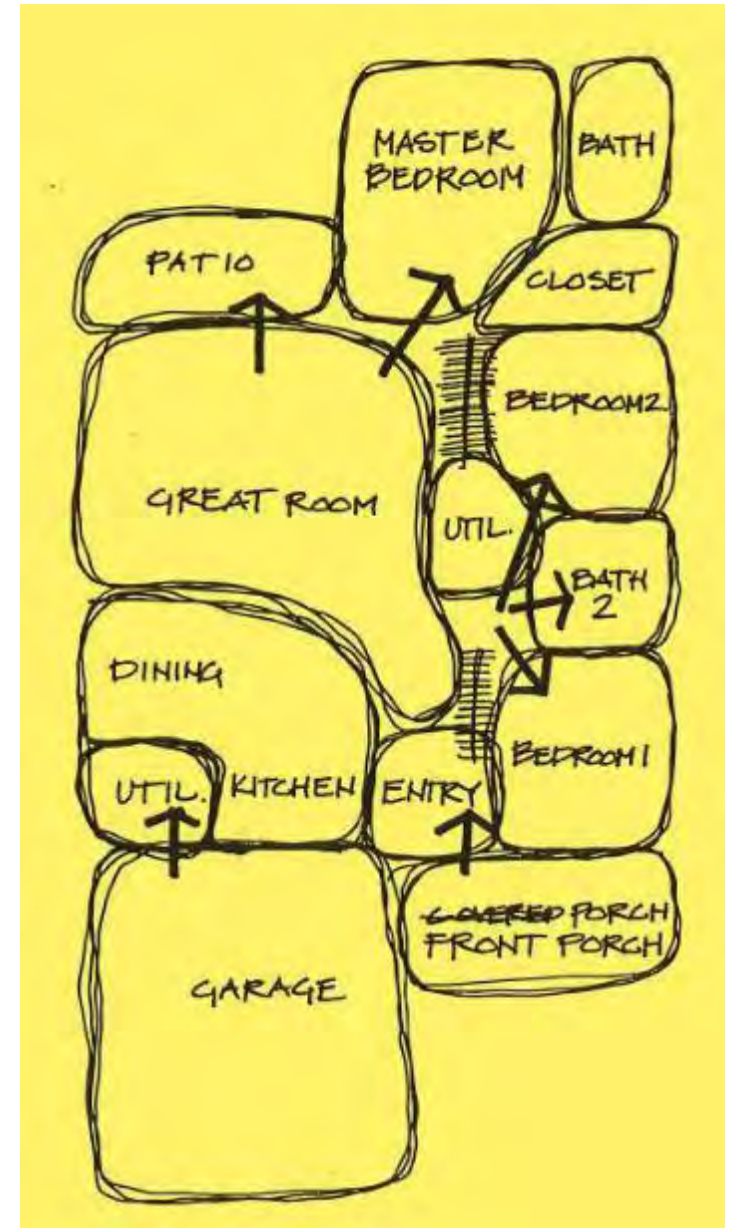
Fast Eddie's Project – Spatial Planning
Design Process 3

BSBCRT501A Originate and develop concepts

BSBDES502A Establish, negotiate and refine a design brief

Bubble Plans

- The bubble diagram is a trial and error method to quickly explore all the planning options of a space planning problem.
- The general approach should be free and intuitive.
- The purpose of the bubble diagram is to explore and record many different, basic options for the project.
- An awareness of structural elements such as windows, architectural elements, and services; then a full understanding of the importance of each element will slowly develop and the bubble diagram process is undertaken.



Example

Bubble Plans – Activity

- Using the floor plan of the Fast Eddie's project, create several bubble diagrams of possible layout solutions.
- Start by tracing the interior space of the plan.
- Use the cutting station spatial requirement drawing prepared earlier to ascertain how much space is needed for the 3 x cutting stations.
- After roughing this space in, you can allocate space to the waiting area, point of sale counter and storage area.
- Complete several viable options for the space.

