

# **THE DESIGN PROCESS**

**for an interior design project**

# THE DESIGN PROCESS

for an interior design project

## STAGE 1

---

- Preliminary meeting
- The client brief
- The business proposal and client's agreement to proposal

## STAGE 2

---

- Design survey, measure and analysis
- Concept / initial design work
- Budget costings
- Preparation of client presentation
- Presentation to client of initial through to final concepts



Refinement and development of design to client's satisfaction.

**CLIENT AGREEMENT**

## STAGE 3

---

- Working drawings (which might include lighting and service plans, designs for window treatments and joinery)
- Specifications / tender documents (against which builders, suppliers, manufacturers and specialists quote for their work)

## STAGE 4

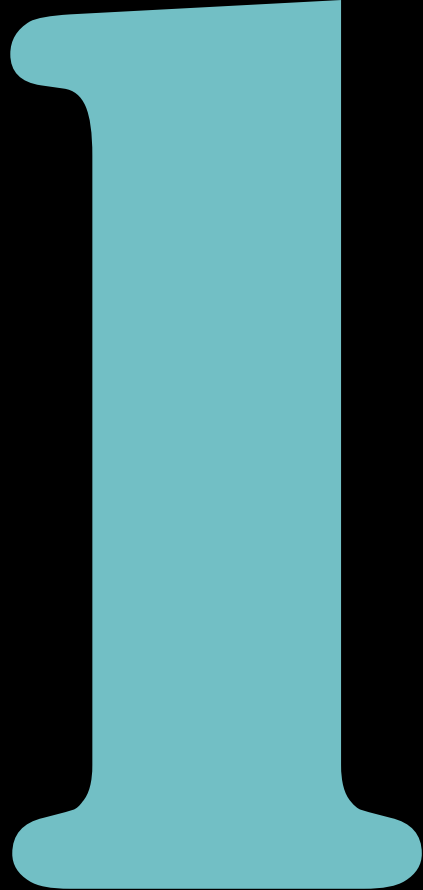
---

- Job program
- Schedule of works
- Procurement
- Site inspections
- Installation of furnishings
- Completion and handover

# GRAPHIC DOCUMENTATION

At various stages of the design process in interior design, particular styles of drawings are more suitable than others.

Following are some general guidelines for the various types of drawings for graphic documentation throughout the design process.



## **STAGE 1**

---

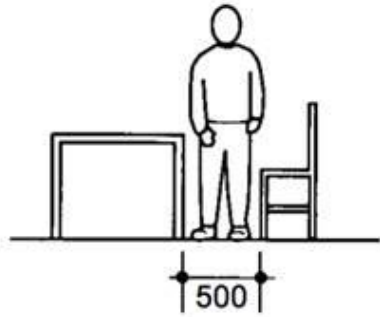
- Preliminary meeting
- The client brief
- The business proposal and client's agreement to proposal

## **GRAPHIC DOCUMENTATION**

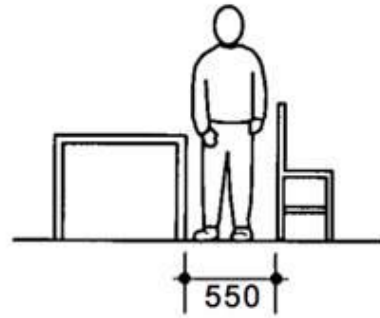
### **STAGE 1** Design brief

---

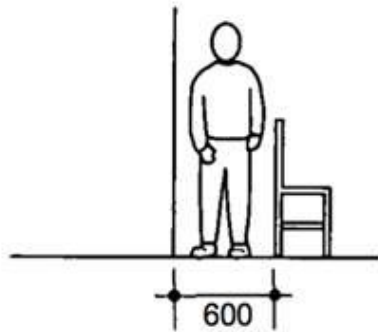
- Existing site sketches with measurements
- Basic space planning sketches



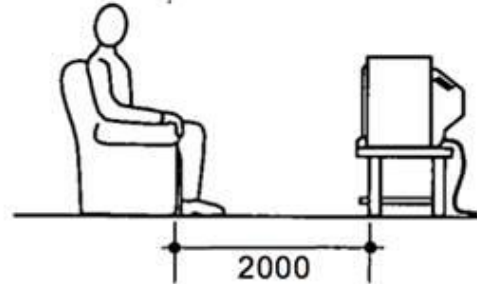
**2.59** *Passing between two items of furniture, each table height or lower*



**2.60** *Passing between two items of furniture, one table height or lower, the other higher on the wall*

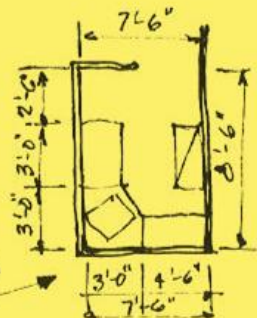
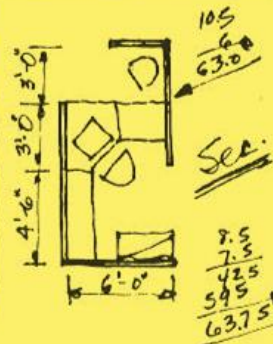
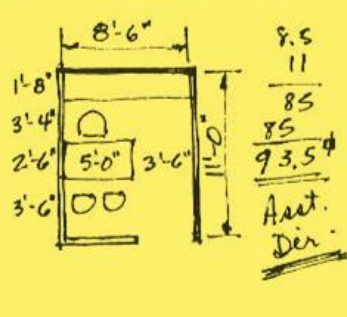
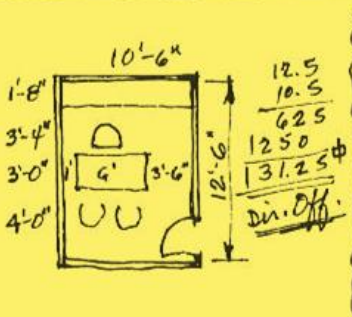
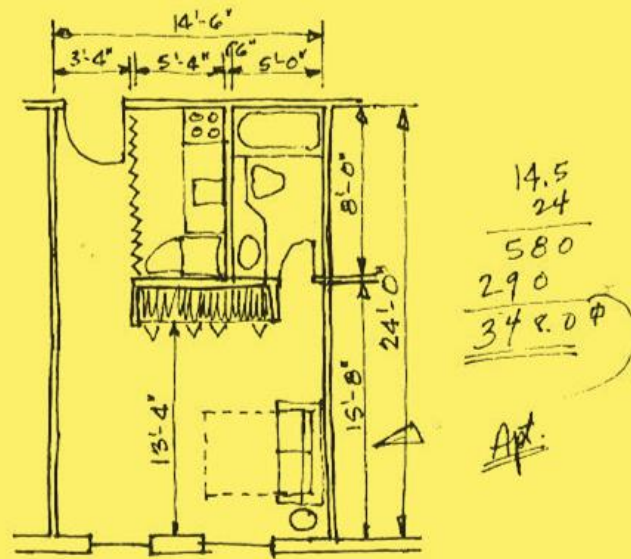
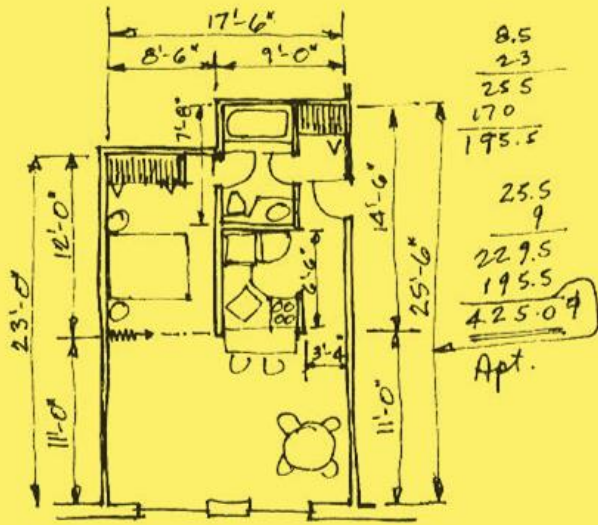


**2.61** *Passing between the wall and tall furniture*



**2.62** *Watching television. Most people prefer to sit a distance of more than eight times the height of the picture*

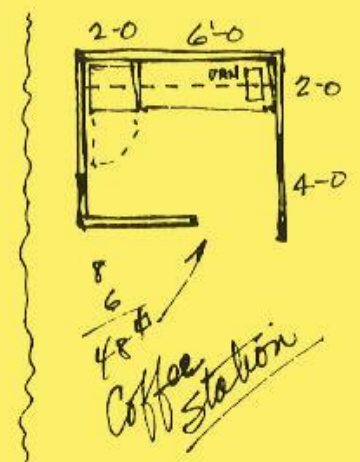
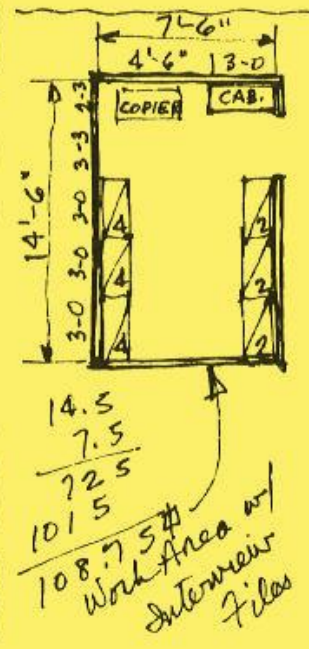
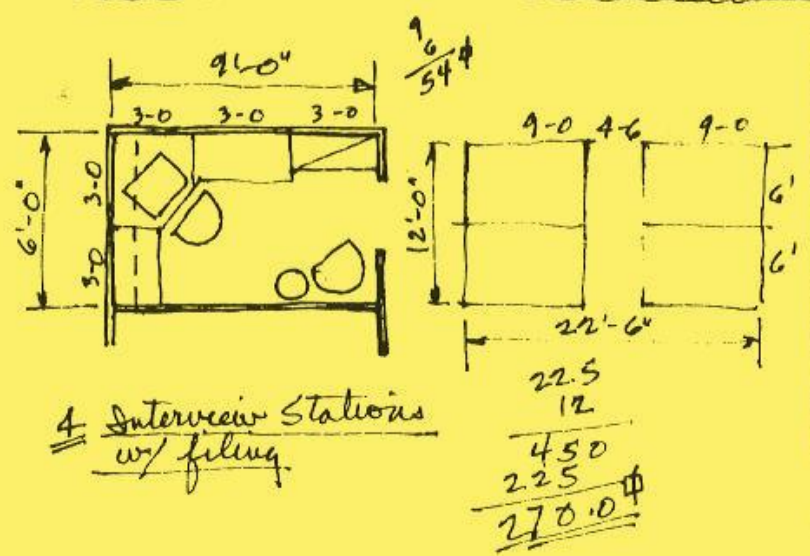
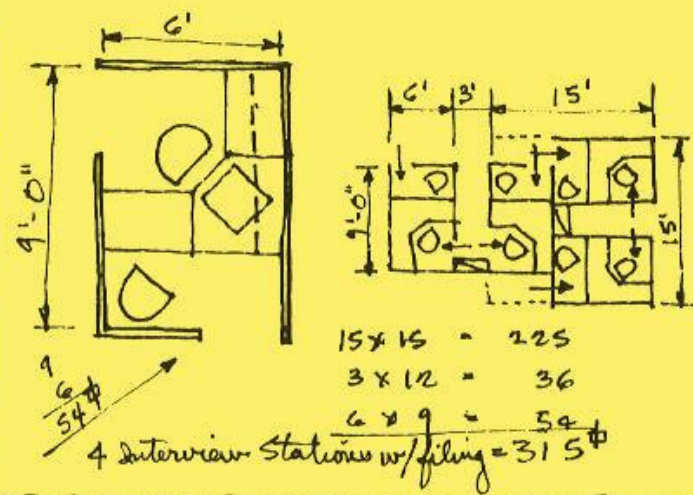
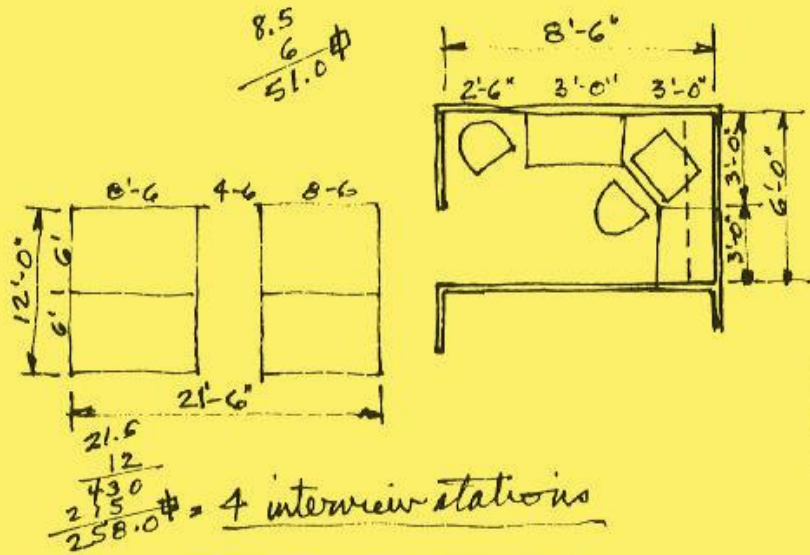
**Anthropometric information** relevant to the project should be obtained before undertaking space planning.



**Prototypical Plan Sketches**  
Used to help the designer plan space with information from anthropometric data, etc.

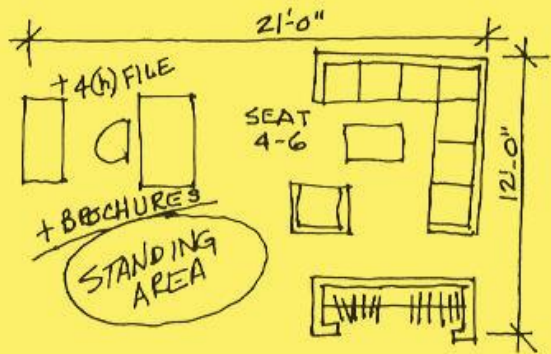
**Technique** – Freehand sketches made over scaled grid underlay.

**Tools** – Pencil, marker pens, yellow trace.

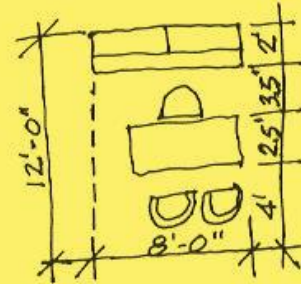
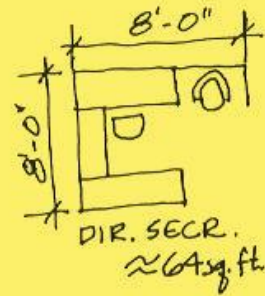
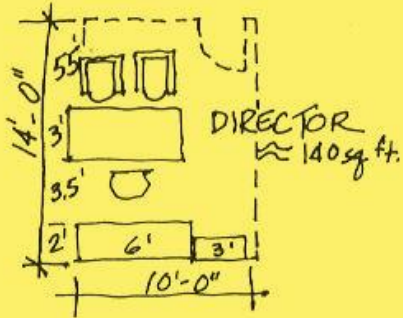


Notes and relevant measurement information should be recorded on the prototypical plans

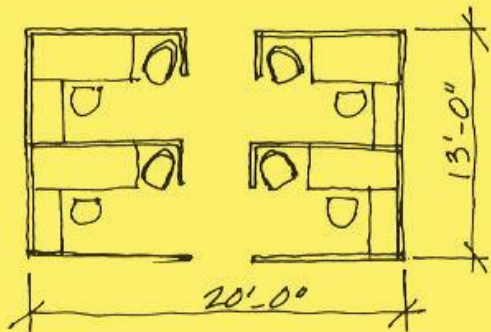




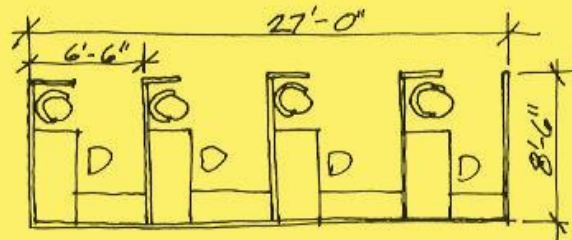
RECEPTION  $\approx 250$  sq. ft.



ASST. DIR.  
 $\approx 96$  sq. ft.



INTERVIEW  $\approx 260$  sq. ft.



INTERVIEW  $\approx 230$  sq. ft.

The information collected is used to **accurately** develop the spatial planning.





## **STAGE 2**

---

- Design survey, measure and analysis
- Concept / initial design work
- Budget costings
- Preparation of client presentation
- Presentation to client of initial through to final concepts

# **GRAPHIC DOCUMENTATION**

## **STAGE 2** Design development

---

- Initial design sketches
- Concept drawings
- Schematic drawings

CRITERIA MATRIX		FOR: UNIVERSITY CAREER COUNSELING CENTER							
	SQ FOOTAGE NEEDS	ADJACENCIES	PUBLIC ACCESS	DAYLIGHT AND/OR VIEW	PRIVACY	PLUMBING	SPECIAL EQUIPMENT	SPECIAL CONSIDERATIONS	
① RECEPTION	250	② ⑤	H	Y	N	N	N	TRAFFIC HUB ADJ. TO MAIN ENTRANCE	
② INTERVIEW STA. <sup>(4)</sup>	220	① ④	M	I	L	N	N	FEEL LIKE A TEAM OF FOUR	
③ DIRECTOR	140	④	M	Y	H	N	N	HIGHEST IMAGE ACCESS TO REAR DR FOR PRIVATE EXIT	
④ STAFF	180	③	M	Y	M	N	N		
⑤ SEMINAR RM	300	① ⑥ ⑦	H	I	H	N	Y	A/V USE IMPORTANT CLOSE TO ENTRANCE	
⑥ REST ROOM (2)	200	↑ CENTRAL ↓	M	N	H	Y	N		
⑦ WORK AREA	120	② ④ CENTRAL	L	N	M	Y	Y		
⑧ COFFEE STATION	50	CENTRAL	H	Y	N	Y	Y	CONVENIENT FOR EVERYONE	
⑨ GUEST APARTMENT	350	REMOTE	L	Y	H	Y	N	RESIDENTIAL CHARACTER	

TOTAL NEEDED = 1810 S.F.  
2500 S.F. - 625 S.F. = 1875 S.F.

TOTAL AVAILABLE = 2500 S.F.  
LESS 25% FOR CIRCULATION = 625 S.F.

NOTE: IN "ADJACENCIES" COLUMN  
④ - INDICATES ADJACENCY IMPORTANCE  
⑤ - INDICATES MAJOR ADJACENCY IMPORTANCE

#### LEGEND

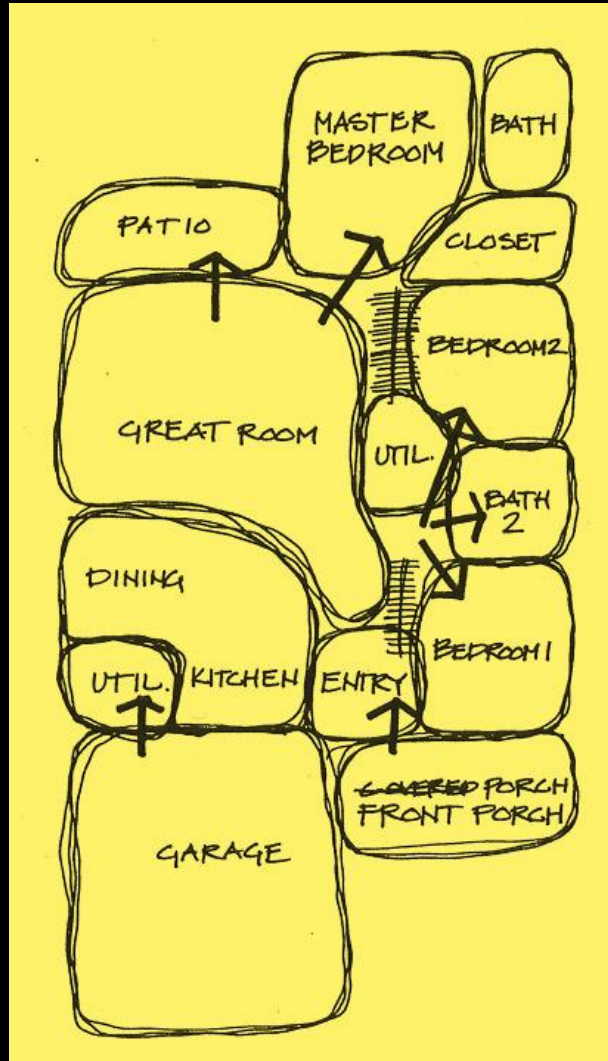
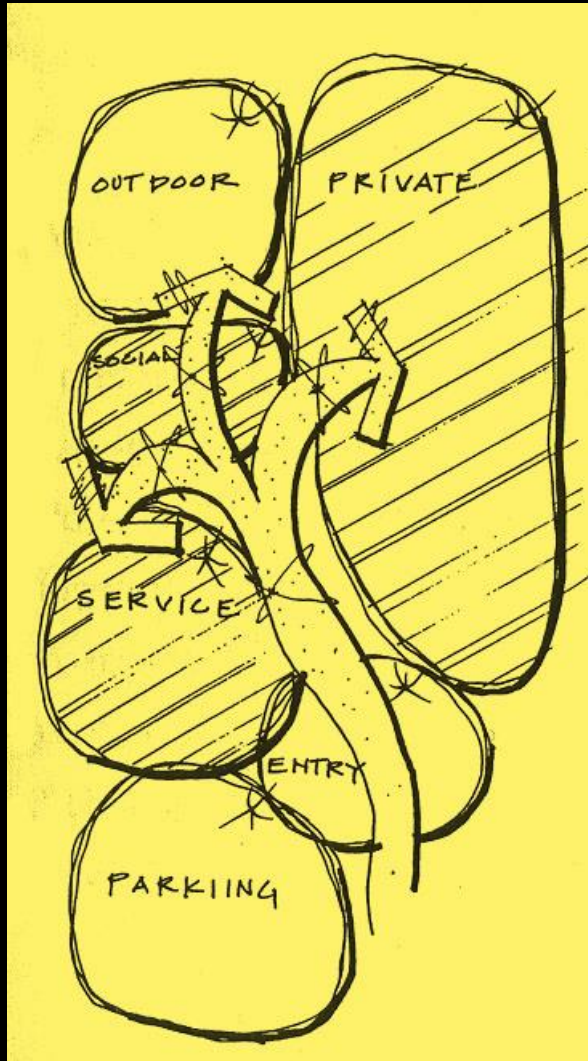
H = HIGH  
M = MEDIUM  
L = LOW  
Y = YES  
N = NO / NONE  
I = IMPORTANT BUT  
NOT REQUIRED

## Criteria Matrix

Used to help the designer make decisions about adjacencies and spatial considerations.

**Technique** – Sketched or produced by computer

**Tools** – Marker pens, and paper or computer and word processing (table) or spreadsheet software

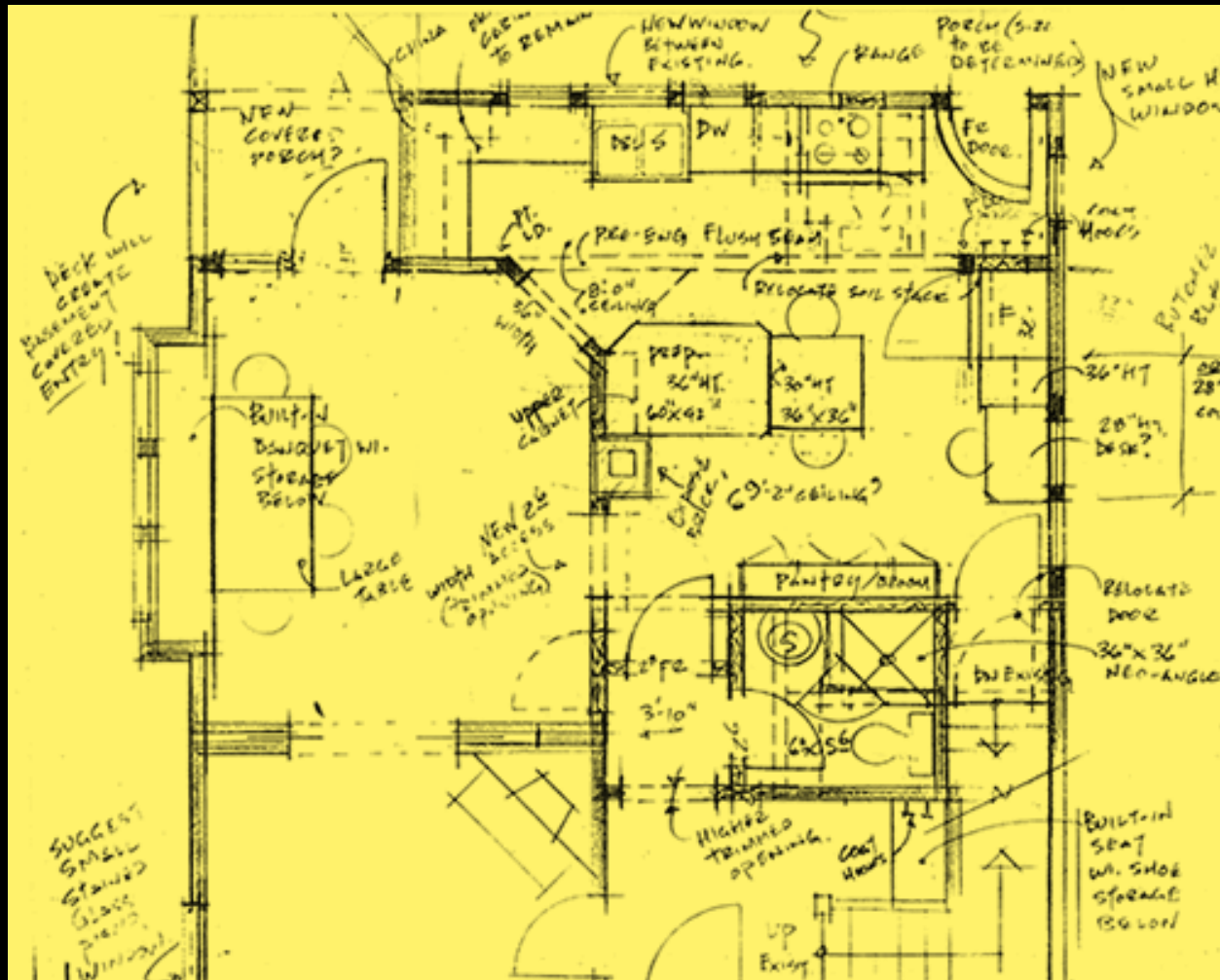


## Initial Planning Sketches

Used to help the designer plan space and traffic flow, etc.

**Technique** – Freehand sketches with scaled plan of existing conditions as underlay.

**Tools** – Pencil, marker pens, yellow trace.



Initial Concept Sketches



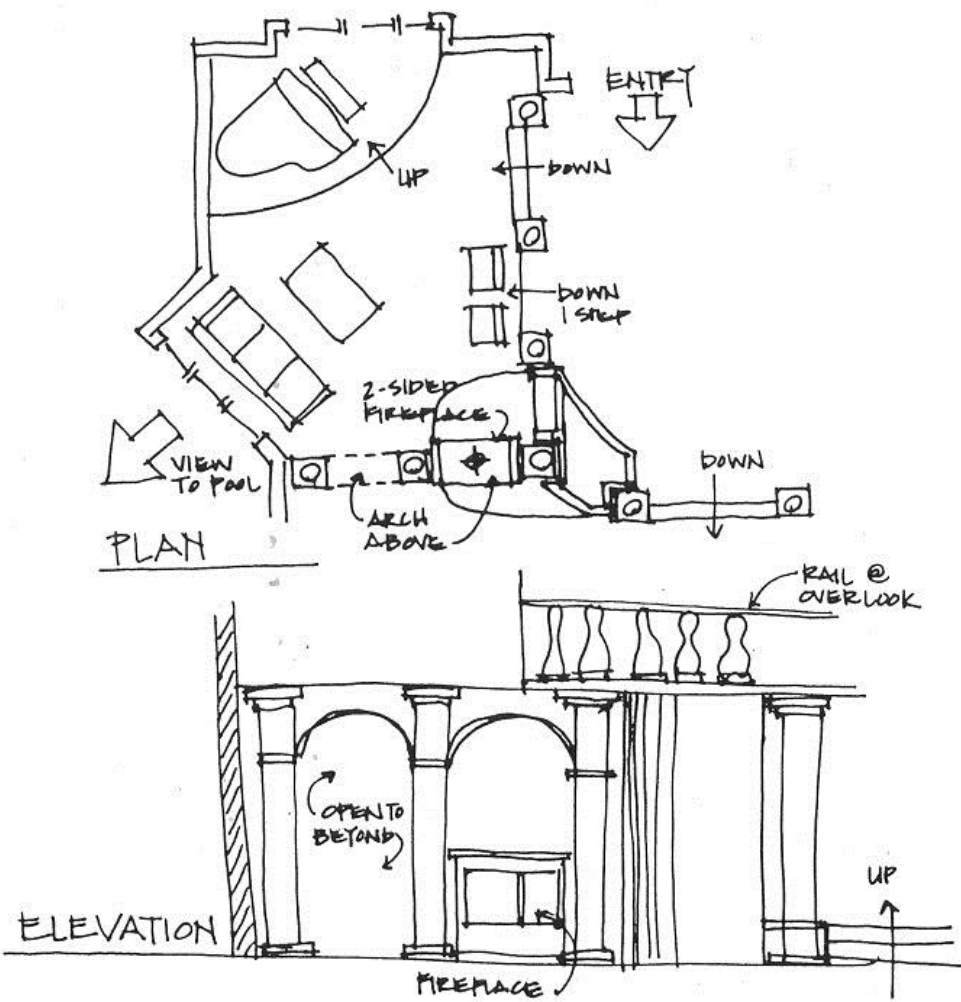
**This is the stage when the theme  
should be developed**





**Furniture, finishes and fixtures should be introduced to the process for further design development**



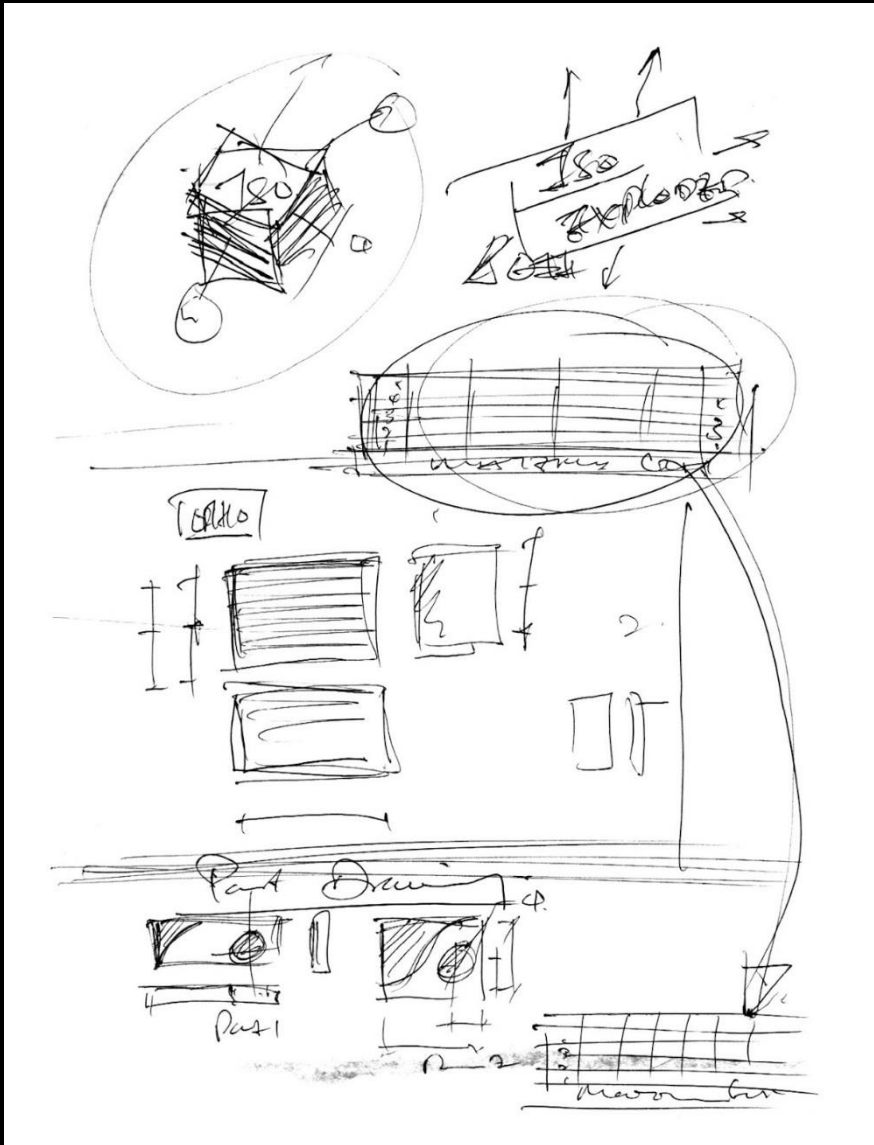


## Initial Concept Sketches

Used to apply planning and experiment with the space

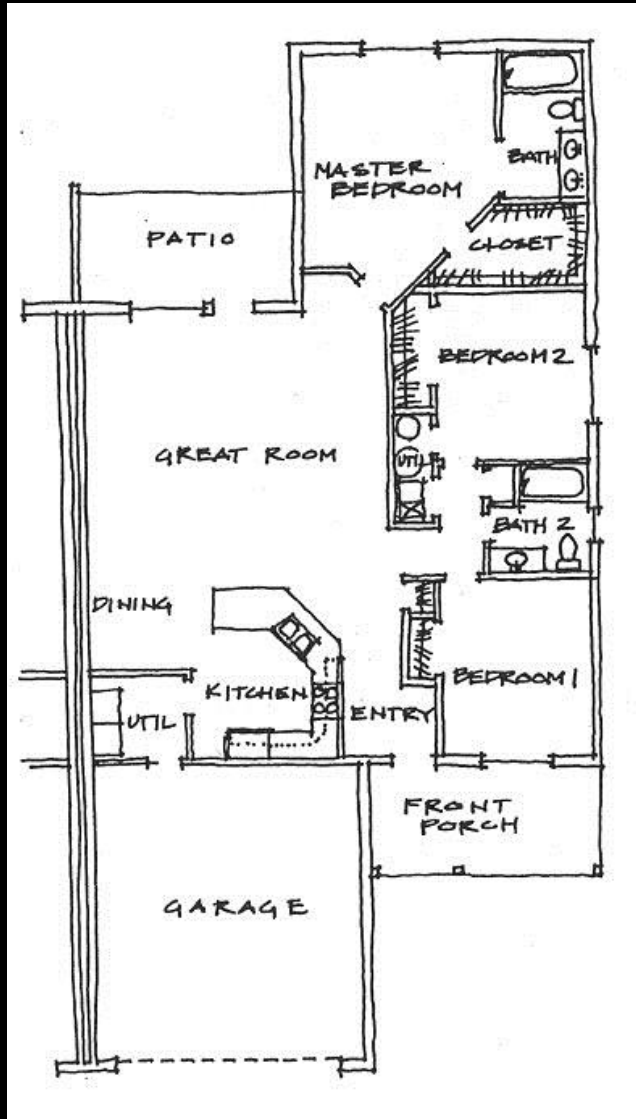
**Technique** - Freehand drawing made with scaled grid as underlay and scaled furniture template.

**Tools** - Pencil, marker pen.



## Initial Concept Sketches

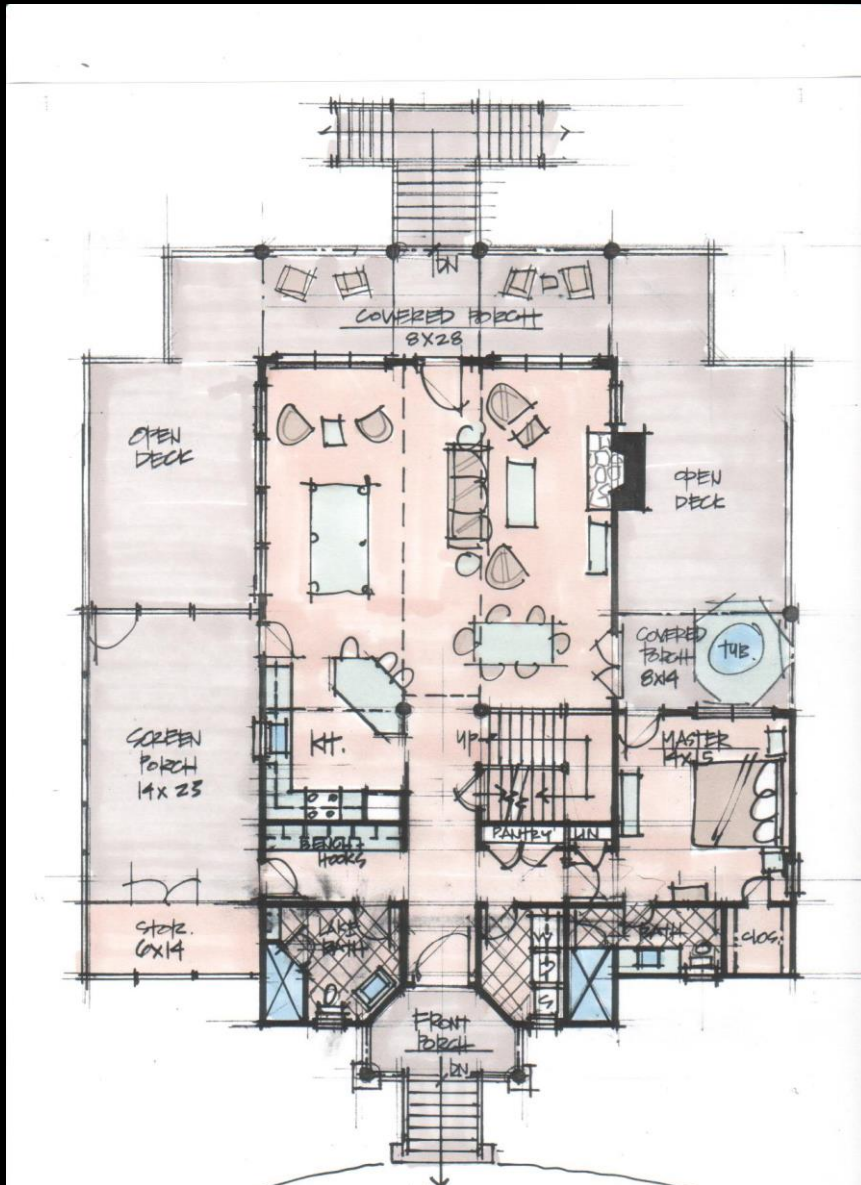
Custom furniture and fixtures need to be developed as initial concepts as well.



## Concept Sketches

Used during the design development stage to confirm and finalise concepts.

**Technique** – Freehand pen drawing over scaled plan (or traced from preliminary CAD drawings)



## Concept Sketches

Concept drawings may be coloured for clarity.

**Technique** – Freehand pen drawing over scaled plan (or traced from preliminary CAD drawings) with marker colouring.

Note: This not a rendering method, simply a colour code method to help clarify spatial function



## Concept Sketches

Perspective drawings are produced to help identify the materials and finishes and furniture.

**Technique** – Freehand pen perspective drawing (or traced from preliminary CAD drawings) rendered loosely with marker colouring.



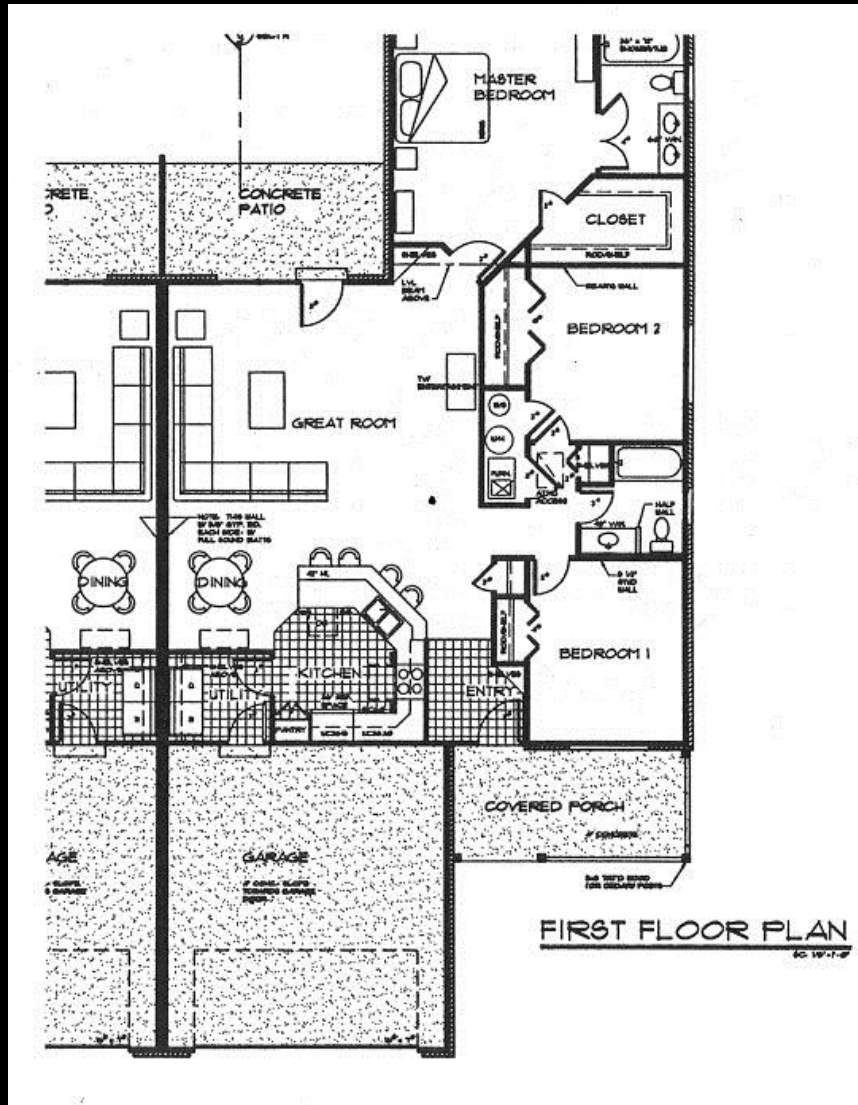
## Concept Sketches

Perspective drawings are produced to help identify the materials and finishes and furniture.

**Technique** – Freehand pen perspective drawing (or traced from preliminary CAD drawings) rendered loosely with marker colouring.



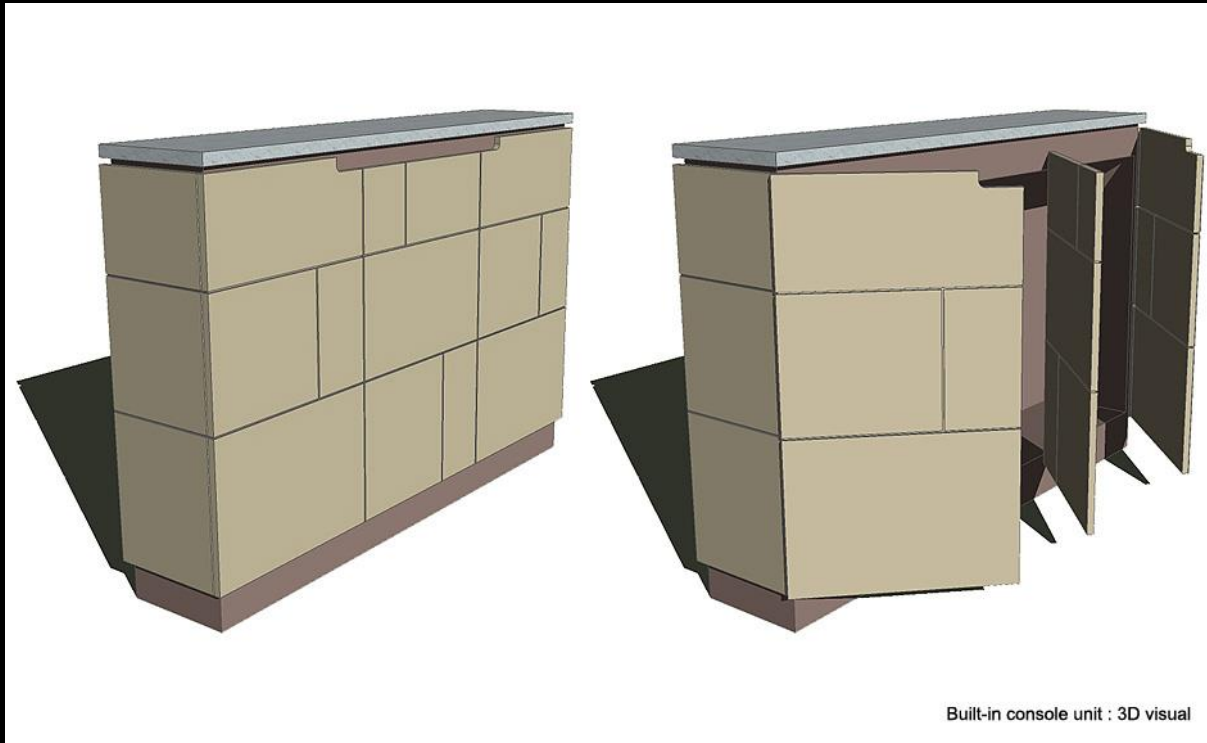
**CLIENT**  
**PRESENTATION OF**  
**CONCEPT OPTIONS**



## Schematic Drawing

After all elements of the design have been agreed upon by the client. Several options may be presented for consideration of the client.

Technique – CAD drawing



## Schematic Drawing

Schematic drawings may include custom furniture pieces.

**Technique** – CAD drawing



Elevations

3D Visuals

## Final Concept Presentation Drawing

When the final decisions have been made about all options available by the client, a set of boards is made to showcase the design. The drawings are rendered and images and samples displayed.

**Techniques** – Manual, CAD drawing, or hybrid.



**PERSPECTIVE**  
SERVICE COUNTER VIEW

**GOALS**

- Develop a use for the space that respects both the historical significance of the building and the needs of the neighborhood community.
- Develop a use that is economically viable and sustainable.
- Develop a use that respects the building's architectural integrity and provides a high-quality experience for users.
- Develop a use that respects the building's historical and architectural significance and provides a high-quality experience for users.
- Develop a use that respects the building's historical and architectural significance and provides a high-quality experience for users.

**CONCEPT**

A sustainable building is being designed and constructed to reduce the environmental impact of the building over its entire life cycle. This includes the building's design, construction, operation, maintenance, and eventual demolition. The goal is to create a building that is energy-efficient, environmentally friendly, and socially responsible. This concept is based on the following principles:

- Energy Efficiency:** The building will be designed to minimize energy consumption through the use of high-quality insulation, energy-efficient lighting and appliances, and passive solar design.
- Water Conservation:** The building will be designed to conserve water through the use of low-flow fixtures, rainwater harvesting, and greywater recycling.
- Material Selection:** The building will be designed to use sustainable materials that are locally sourced, recycled, and have a low environmental impact.
- Indoor Air Quality:** The building will be designed to provide a healthy and comfortable indoor environment through the use of low-VOC materials, natural ventilation, and air filtration.
- Community Integration:** The building will be designed to integrate with the surrounding community through the use of public space, pedestrian-friendly design, and community engagement.

The goal of this project is to address the need for a modern, sustainable, and socially responsible building in the South St. Louis area. The project is located in a historic building that has been largely abandoned. The goal is to create a building that is energy-efficient, environmentally friendly, and socially responsible. This concept is based on the following principles:

- Energy Efficiency:** The building will be designed to minimize energy consumption through the use of high-quality insulation, energy-efficient lighting and appliances, and passive solar design.
- Water Conservation:** The building will be designed to conserve water through the use of low-flow fixtures, rainwater harvesting, and greywater recycling.
- Material Selection:** The building will be designed to use sustainable materials that are locally sourced, recycled, and have a low environmental impact.
- Indoor Air Quality:** The building will be designed to provide a healthy and comfortable indoor environment through the use of low-VOC materials, natural ventilation, and air filtration.
- Community Integration:** The building will be designed to integrate with the surrounding community through the use of public space, pedestrian-friendly design, and community engagement.



CONCEPT VIEW A

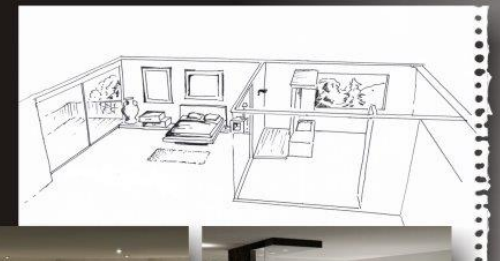
**SOUTH ST. LOUIS PROJECT**  
RETAIL SPACE 8



BOOKSHELF ELEVATION A  
SCALE 1/8" = 1'-0"



**Final Concept Presentation Drawing**  
More examples.



**The Master Bedroom and Bathroom**  
part of the Connemara sustainable house project  
Interior design, modeling and rendering by Helena Michel





# Final Concept Presentation Drawing

More examples.



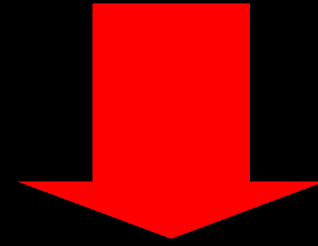
residential design



the smith project







**CLIENT  
AGREEMENT**



## **STAGE 3**

---

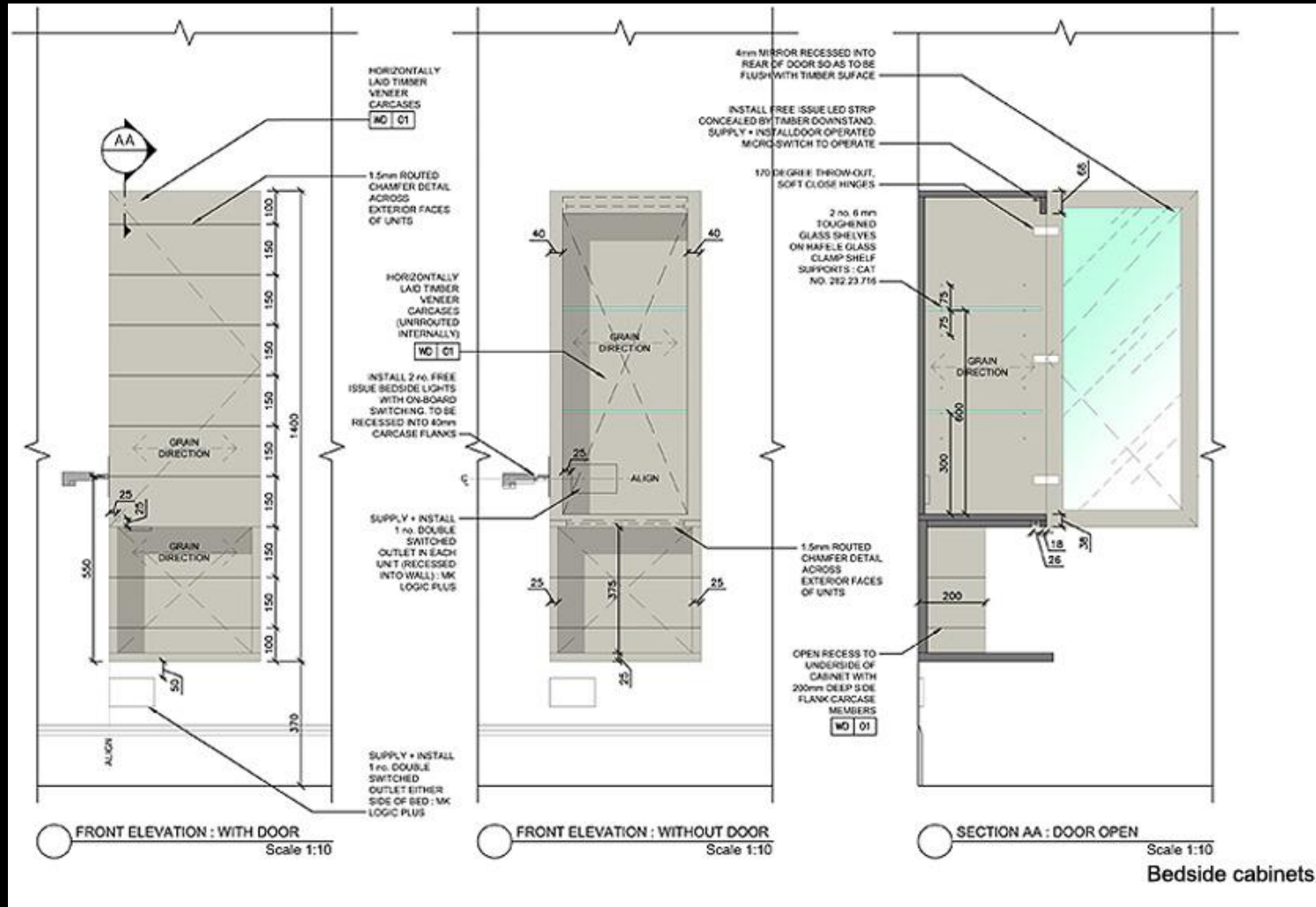
- Working drawings (which might include lighting and service plans, designs for window treatments and joinery)
- Specifications / tender documents (against which builders, suppliers, manufacturers and specialists quote for their work)

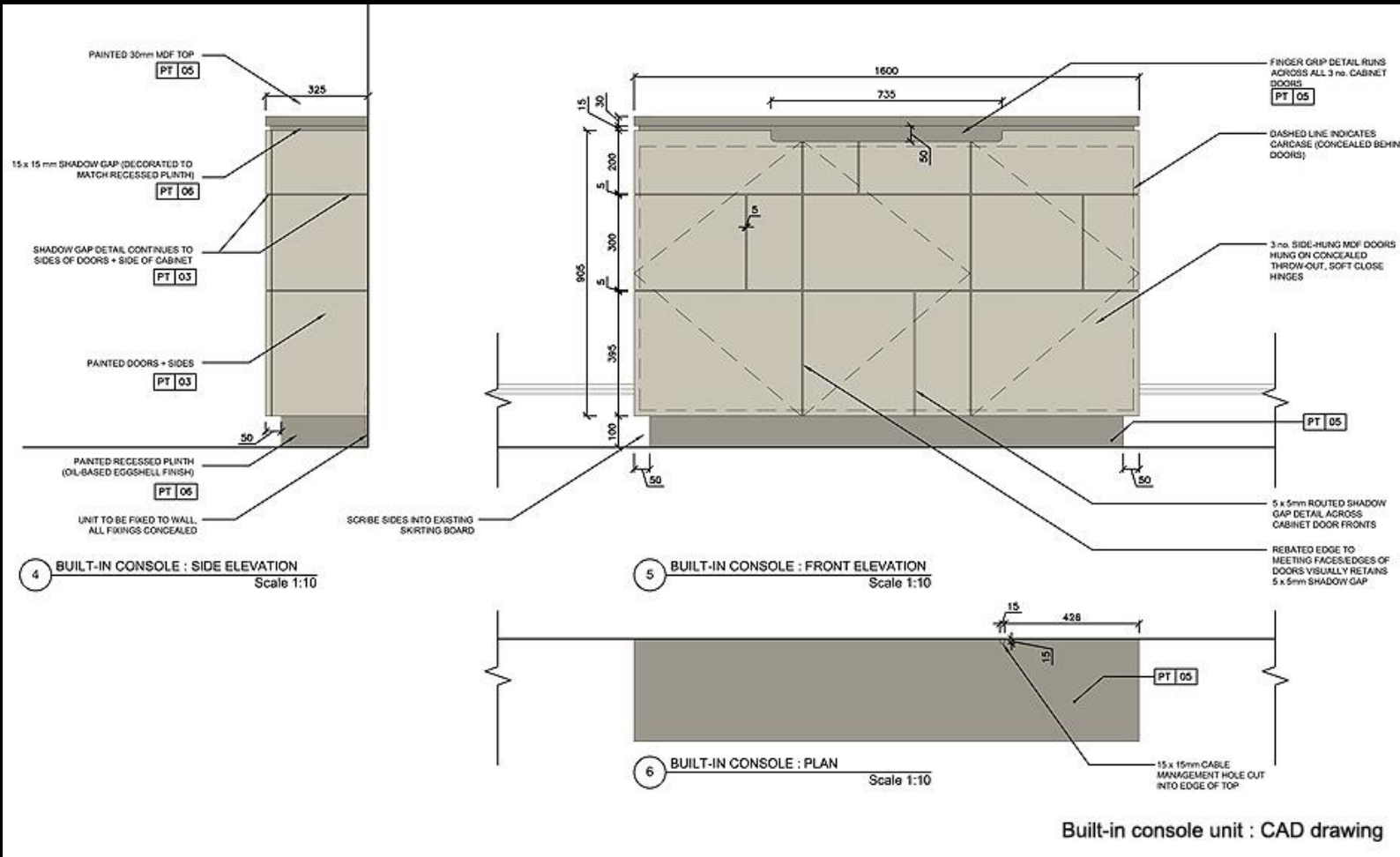
## **GRAPHIC DOCUMENTATION**

### **STAGE 3** Contract documents and specifications

---

- Working drawings

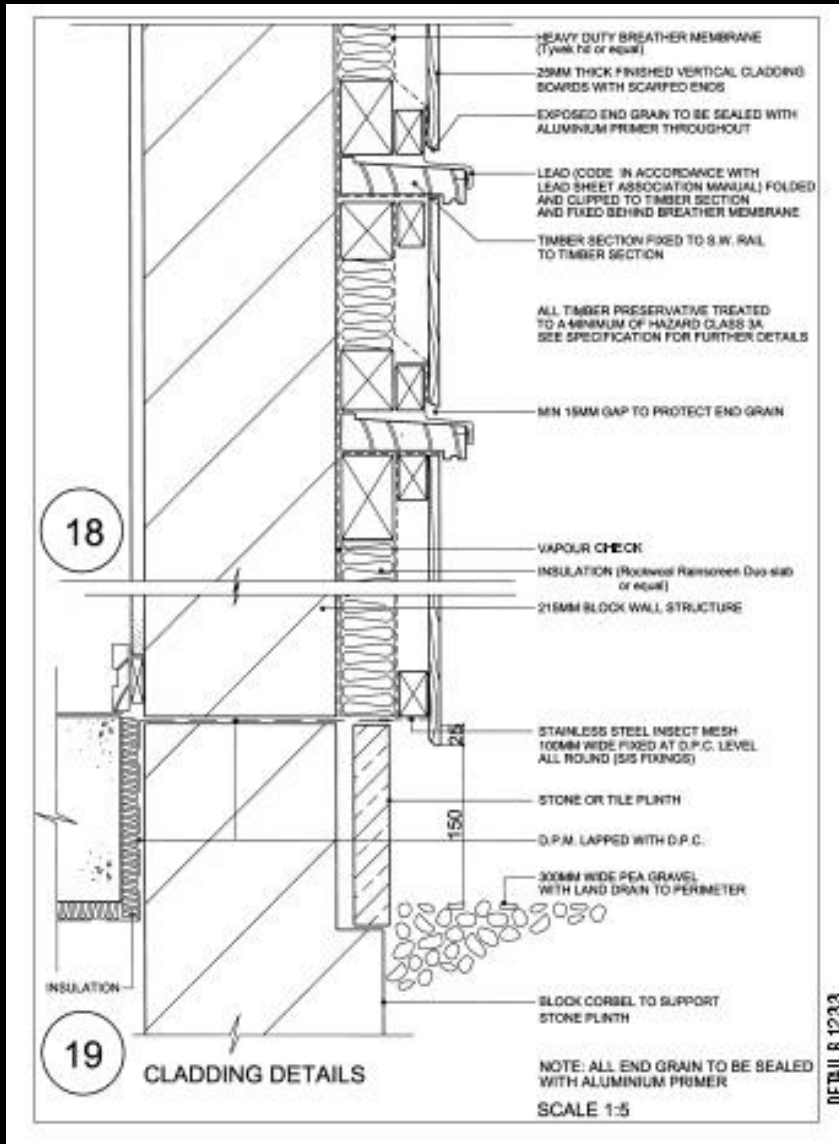




## Working Drawings

Technical drawings including plans, elevations, sections and details created for tradespersons, suppliers etc. on the project.

**Technique** – CAD drawings organised in sets.



## Working Drawings

Technical drawings including plans, elevations, sections and details created for tradespersons, suppliers etc. on the project.

**Technique** – CAD drawings organised in sets.



# 4

## **STAGE 4**

---

- Job program
- Schedule of works
- Procurement
- Site inspections
- Installation of furnishings
- Completion and handover

## **GRAPHIC DOCUMENTATION**

Generally, no drawings (graphic documentation) is required in stage 4.

**THE END**