

## 4.3 HAIR STYLING

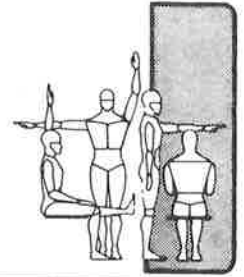


TABLE	STYLING	SHAMPOOING	DRYING	WAITING	CIRCULATION	ACTIVITIES	ANTHROPOMETRIC DATA	
							Code	Measurement
1A,2B	●	●					1	STATURE
1B,3C	●						2	EYE HEIGHT
1C,3B		●					3	ELBOW HEIGHT
1F,3G	○						6	EYE HEIGHT SITTING
1G,3E		●					7	SHOULDER HEIGHT SITTING
1Q,3F			●	●			17	BUTTOCK-TOE LENGTH
1U,4E	○						21	SIDE ARM REACH
1W,6B	●					●	23	MAXIMUM BODY DEPTH
1X,6A		●				●	24	MAXIMUM BODY BREADTH

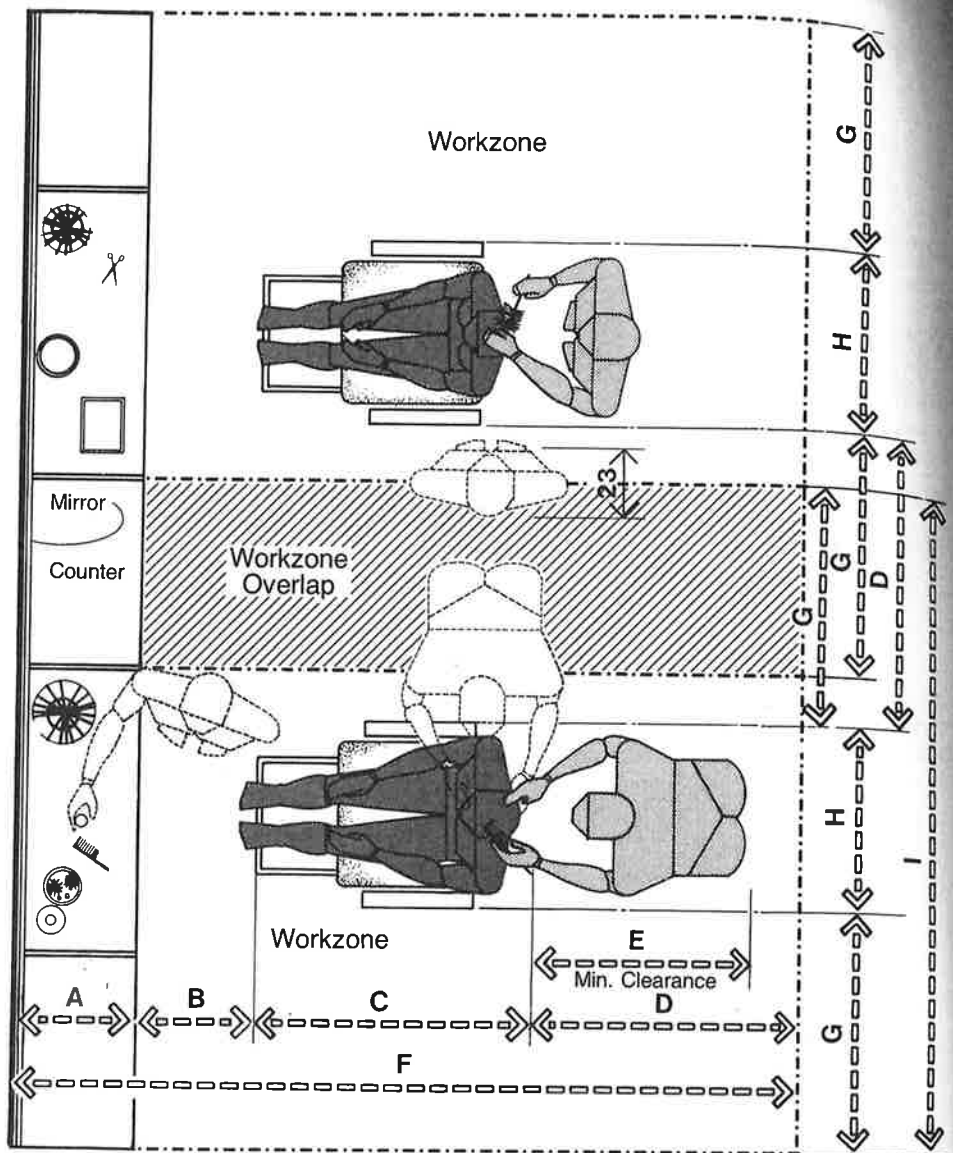
One of the most important considerations in making hair styling spaces responsive to human dimension is that of adjustability. Given the tremendous variability in body size, both in terms of the customer and the stylist and the nature of the activity involved, it is virtually impossible to accommodate the majority of people without some degree of adjustability to compensate for the great variability in body size. The range of adjustment possible in most standard chairs on the market is not great enough. The styling operation, for example, requires the operator to style the hair of the seated customer about the lower head, neck, and shoulder areas. Not only is it essential that the stylist have a clear view of the work area, but in many instances he or she must be able to step back and check for smoothness and level of cut. Even with the chair elevated to its maximum position, the taller stylist must still stoop to perform his work. Until such time that more chairs with a greater range of adjustability become available, the interior designer or architect should explore other ways to make the operation more responsive to the limitations imposed by human dimension and body size.

Another area where much improvement is needed is the interface among customer, chair, wash basin, and operator in the typical shampoo station. Since most facilities do not permit comfortable neck flexion, the most critical phase of the interface involves the head and wash basin. Moreover, the hard, although rounded, edge of the basin in direct contact with the back of the neck adds to the discomfort. The quality of the interface could perhaps be improved by building adjustment capability into the chair so that the body may be placed in a more horizontal position. Within the limitations imposed by existing equipment, the drawings on the following pages illustrate some of the typical situations encountered in the design of hair styling spaces. The anthropometric measurements of major concern are indicated in the above matrix.

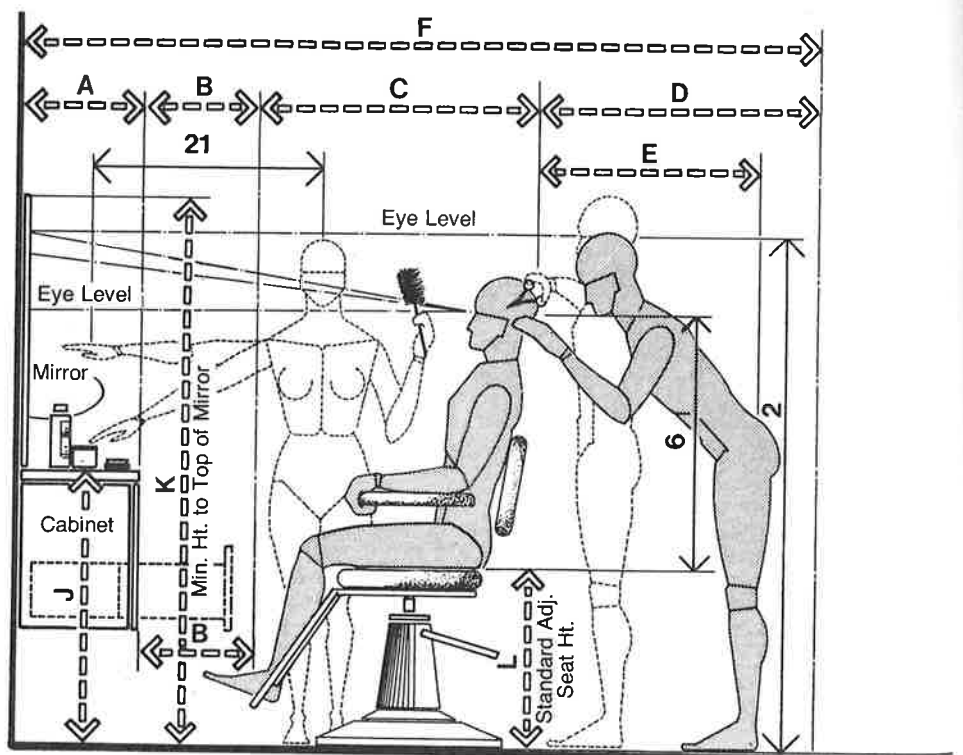
# 4.3 HAIR STYLING

A plan view showing two styling stations and required clearances is shown in the drawing at the top of the page. To accommodate the seated customer and provide for circulation and appropriate movement of the hair stylist, a space of 95 to 105 in, or 241.3 to 266.7 cm, deep and 83 to 87 in, or 210.8 to 221 cm, wide is required for each station. To conserve floor space, however, it is suggested that the spaces required for the individual styling stations overlap each other by 24 in, or 61 cm. The area of overlap is used as a shared activity zone.

The bottom drawing shows the styling station in elevation. It should be noted that despite the adjustability of the chair, the range of movement does not allow the chair to be elevated high enough to permit the stylist to work around the lower head and neck area without stooping.



## STYLING STATIONS



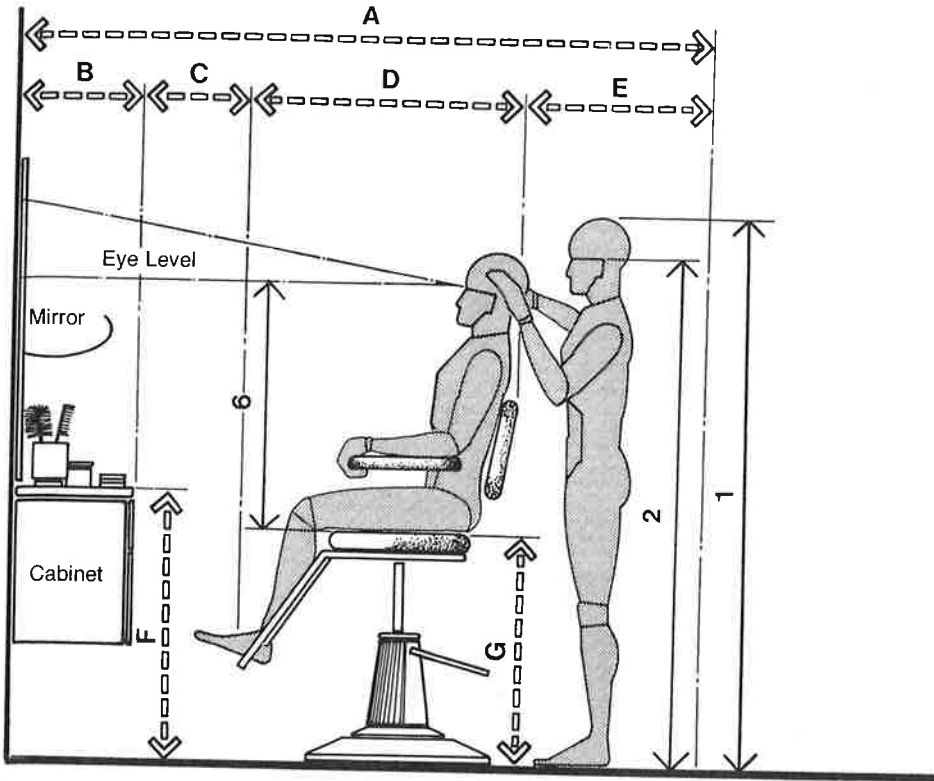
	in	cm
A	16-18	40.6-45.7
B	15 min.	38.1 min.
C	29-36	73.7-91.4
D	36	91.4
E	30 min.	76.2 min.
F	96-105	243.8-266.7
G	30	76.2
H	23-27	58.4-68.6
I	83-87	210.8-221.0
J	34-36	86.4-91.4
K	68 min.	172.7 min.
L	19.5-25	49.5-63.5

STYLING STATION / STANDARD ADJUSTABLE CHAIR HEIGHTS

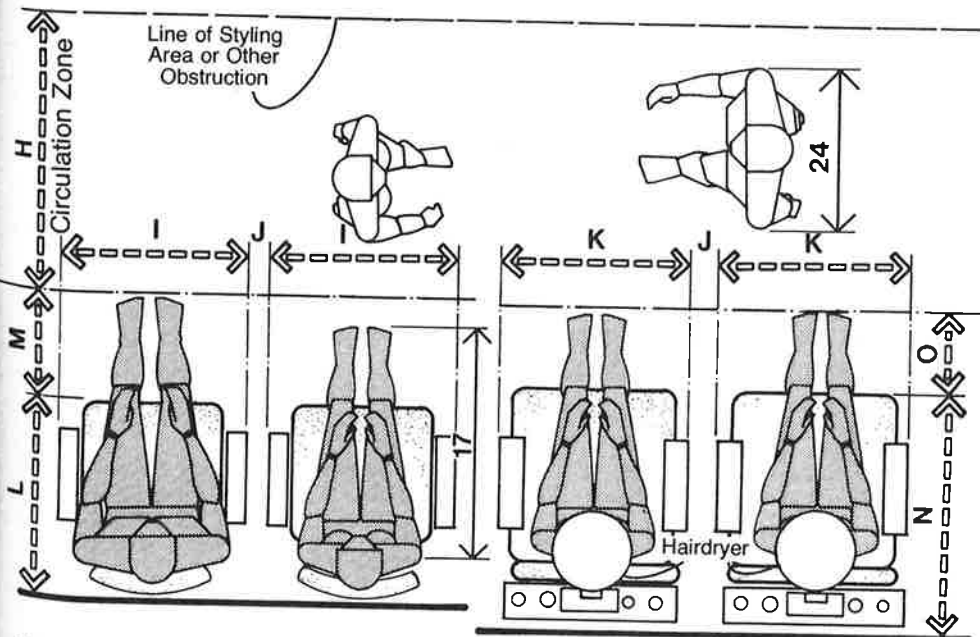
## 4.3 HAIR STYLING

The drawing at the top of the page illustrates a proposed styling chair with an adjustability range of 24 to 36 in, or 61 to 91.4 cm. Such a range, not presently available, would enable the stylist, especially one having a large stature, to trim the back of the head comfortably without having to stoop.

The drawing at the left on the bottom of the page illustrates the clearances required for the waiting area. A minimum clearance of 37 in, or 94 cm, from the wall will accommodate the seated customer. This dimension includes an allowance of 12 in, or 30.5 cm, to accommodate leg projection beyond the edge of the front of the seat. A space of 36 in, or 91.4 cm, is adequate for one-lane circulation in front of the seating. For one person to pass another within the 36-in circulation zone will, however, require one or the other to step aside.



**STYLING STATION/  
OPTIMUM ADJUSTABLE CHAIR HEIGHTS**



**WAITING AREA AND  
CIRCULATION/  
CLEARANCES**

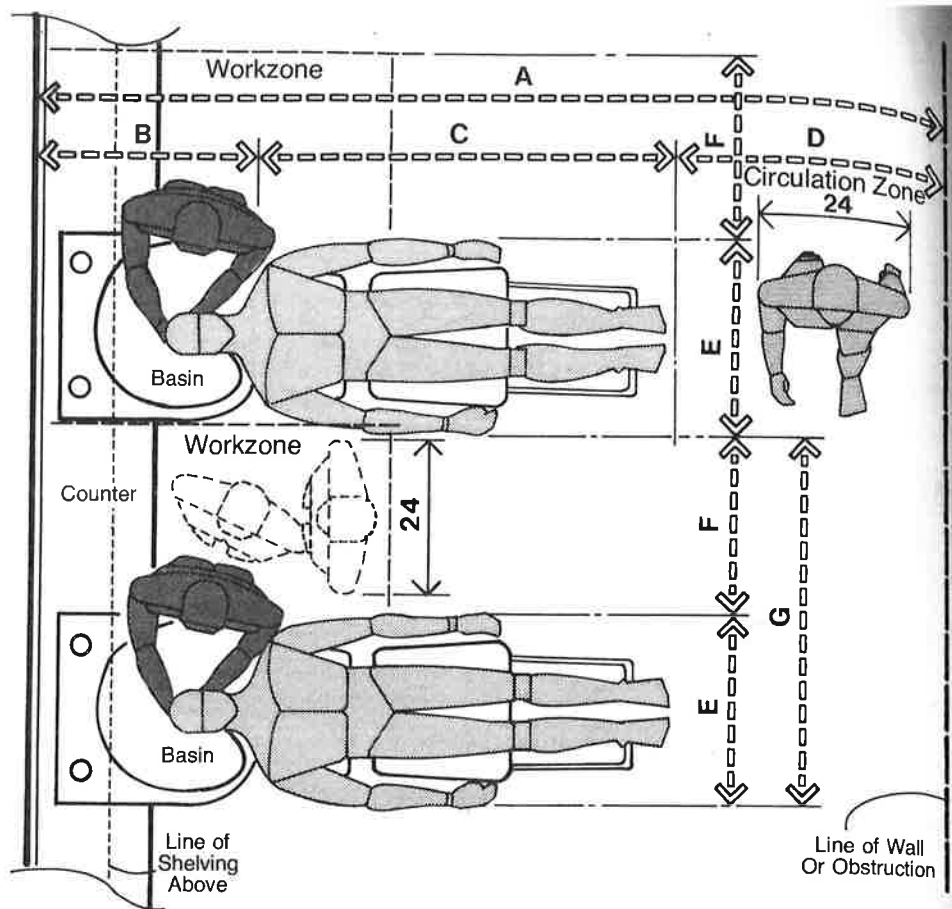
**DRYING AREA AND  
CIRCULATION/  
CLEARANCES**

	in	cm
A	84-93	213.4-236.2
B	16-18	40.6-45.7
C	15 min.	38.1 min.
D	29-36	73.7-91.4
E	24	61.0
F	34-36	86.4-91.4
G	24-36	61.0-91.4
H	36	91.4
I	23-27	58.4-68.6
J	4 min.	10.2 min.
K	24-27	61.0-68.6
L	25-28	63.5-71.1
M	12	30.5
N	31-36	78.7-91.4
O	10	25.4

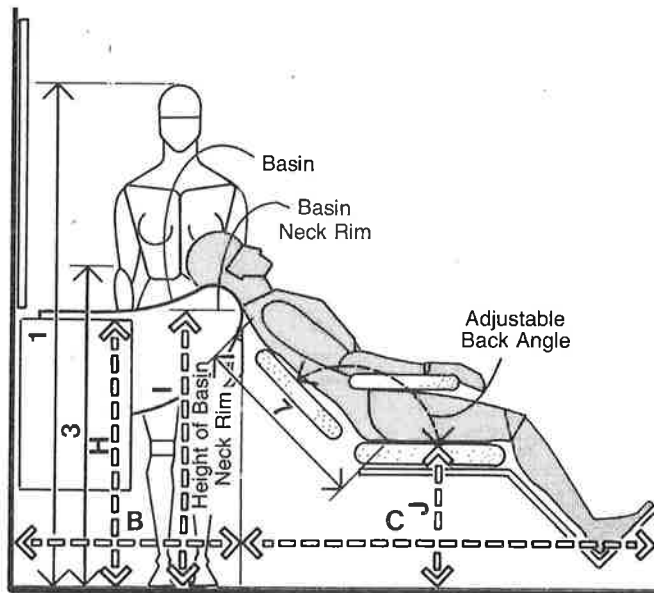
# 4.3 HAIR STYLING

The drawing at the top of the page shows a plan view of a shampoo station. A minimum of 82 in, or 208.3 cm, from the wall is required to accommodate the basin and the seated user with feet extended. A space of 24 in, or 61 cm, between chairs is adequate to accommodate a person while engaged in the shampooing activity.

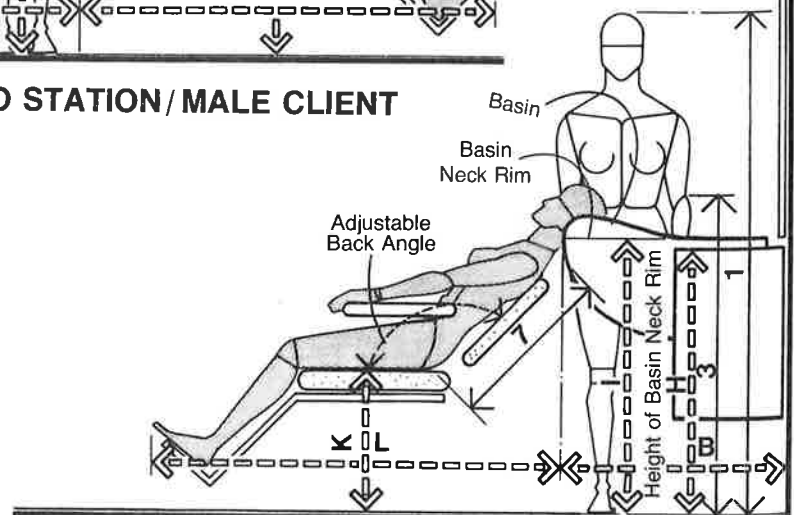
The drawings at the center and the bottom of the page show the shampoo station in elevation. The center drawing illustrates the chair in use by a male customer, while the bottom drawing illustrates the chair in use by a female customer. The clearances shown in each drawing are about the same. It should be noted, however, that since the body size of the larger female is smaller than the body size of the larger male, the clearance from the wall required in the shampoo station exclusively catering to women could be a few inches smaller. Since the difference is minimal, it would be more practical to allow sufficient clearance to accommodate the male customer of larger body size. However, in situations where space may be extremely tight, the small clearance required for the female could be helpful in conserving space. Of greatest importance anthropometrically is that the chair have maximum flexibility in terms of both seat height and backrest angle to ensure a comfortable body fit or interface between the back of the neck and the basin.



## SHAMPOO STATIONS



SHAMPOO STATION / MALE CLIENT



SHAMPOO STATION / FEMALE CLIENT

	in	cm
A	118-126	299.7-320.0
B	28-30	71.1-76.2
C	54-60	137.2-152.4
D	36	91.4
E	24-28	61.0-71.1
F	24	61.0
G	48-52	121.9-132.1
H	34	86.4
I	35	88.9
J	17-18	43.2-45.7
K	18-19	45.7-48.3
L	52-58	132.1-147.3